

2020

Product Guide



WALKER

walker.com

Dear Walker Salesperson,

Welcome to the 2020 Product Guide. This guide is a quick reference for salespeople to the complete Walker product line, and we encourage you to become familiar with its content. As you go through this guide you will notice a few new items like the R21 (tractor and deck), B27i tractor and U48, M52, S61 mower decks.

In addition to the new and updated products that you see in this guide, I am excited to tell you about a couple of other resources that are available to Walker dealers.

Make sure to use the Marketing Assets Catalog online at walkerdealer.com; it is a one-stop location for anything having to do with marketing the Walker Mower. Part numbered items, downloadable assets and customizable content can all be downloaded or ordered from this location.

The Dealer Showroom Enhancement Program is helping dealers transform their showrooms with a fresh new look and Walker display space. Over one-hundred (100) dealers have already taken advantage of this program and are seeing the benefits of letting their customers know they are "in the Walker business". Please contact your Walker distributor for details.

On a year-around basis, the best way to stay up-to-date with the Walker products and programs is to spend time on walker.com. Our marketing department is spending considerable effort to make the web site the first placement of new information and a "living" space for dealers and customers.

Walker Manufacturing Company is proud to be part of your business. I wish you success and prosperity in your selling efforts.

Sincerely,



Bob Walker, Chairman



TABLE OF CONTENTS

Models

Model S14i	4
Model S18	5
Model C19	6
Model C19i	7
Model T23.....	8
Model T27i.....	9
Model D21d	10
Model R21.....	11
Model B18.....	12
Model B19.....	13
Model B23i.....	14
Model B27i.....	15
Model H24d.....	16
Model H27i	17
Model H37i	18

Decks

Deck Compatibility	19
Collection Decks.....	20
Discharge Decks	21
Mulching Decks/Kits.....	23
Multi-Decks.....	24

Attachments

48" Dozer Blade Attachment.....	25
36" Single-Stage Snowblower	25
Operator Soft Cab	25
Front Cab Extension Flap	25
Operator Hard Cab.....	25
Operator Hard Cab Heater	26
Tail Weight	26
ROPS.....	26
A37 Seat Belt Kits.....	26

Implements

Implement Hitch	27
42" or 50" Two-Stage Snowblower	27
47" or 60" Rotary Broom	27
Gauge Wheels for Rotary Broom	27
Debris Blower	28
Loader Bucket.....	28
48" or 60" Dozer Blade	28

Operator Compartment Options

Suspension Seat	28
Comfort Seat.....	29
Standard Seat.....	29
Armrests.....	29
Cup Holder.....	29
Headlights.....	29
Instrument Panel Cover.....	30

Deck Attachments	
40" Spring Tine Dethatcher	30
Boom Sprayer	30
Adjustable Footrests	30
Curb Jumper Ramp	30
Deck Cuff Kits	31
Spyker Spreader Attachment.....	31
Deck Control and Blade Options	
Manual Deck Height Adjuster	31
EZ Pin Puller	31
Deck Lift	31
Power Tilt-Up® Deck.....	32
Deck Height Washers.....	32
Break Away Blades	32
Replaceable Deck Wear Edges Kit.....	32
Drive Tire and Wheel Options	
18 x 7.0-8 Turf Tire	32
18 x 7.0-8 Directional AT Tire	33
18 x 8.5-10 Turf Tire	33
18 x 8.5-10 AT Tire	33
18 x 9.5-8 Turf Tire.....	33
18 x 10.5-10 Turf Tire.....	33
18 x 11.0-10 AT Tire	33
22 x 10.5-12 Turf Tire.....	33
23 x 10.5-12 AT Tire.....	34
23 x 10.5-12 Directional AT Tire.....	34
Tire Chains.....	34
Model B - Big Tire Kit.....	34
Deck Tires and Tail Wheel Options	
Pneumatic Deck Tire	34
Semi Pneumatic Deck Tire.....	34
Single Wide Tail Wheel.....	35
Dual Tail Wheel.....	35
Tail Wheel Lock.....	35
Spread Axle Tail Wheels	35
Grass Handling System (GHS) Options	
Hi-Dump™	35
Power Dump.....	36
GHS Blower Lockout.....	36
No-Catch Deflector	36
GHS Exhaust Screen with Large Holes.....	36
Removable Bins.....	36
Dump Bag.....	36
Standard Features	37

Models

S14i

The S14i features the Kohler Command Pro, ECH440. With an upgraded starter and Delphi fuel injection, the S14i has improved startability with lower operating fuel consumption. The patented Walker GHS Blower with Thru-Shaft PTO and commercial grade components makes the S14i a serious, entry-level commercial mower equally suited for commercial or residential properties.

Type: Collection, 7 Bushel

Power: 14 HP

Engine: Kohler EFI

Ideal Application: Residential Properties, Small Commercial Properties

Key Attributes: Compact, Efficient

Key Engine Specifications

Manufacturer/Model.....	Kohler EFI, ECH440
Displacement.....	429 cc (24.7 cu. in.)
Max Power.....	14 HP at 3600 RPM
Max Torque.....	22.7 ft-lbs
Fuel.....	Gasoline (unleaded - min. 87 octane)
Fuel Capacity.....	1.9 U.S. gal (7.2 liter)
Cooling System.....	Air

Compatible Decks

- Collection - C36R, C42, C42R
- Discharge - S36, S42
- Mulching - M36, M42, M42B

Attachments

- Single-Stage Snowblower
- Dethatcher
- Spyker Spreader Attachment
- Boom Sprayer
- Dozer Blade

Options

- 18 x 8.5-10 Turf Tire
- 18 x 8.5-10 AT Tire
- 18 x 7.0-8 Directional AT Tire
- 18 x 9.5-8 Turf Tire
- Tire Chains
- Pneumatic Deck Tire
- Comfort Seat
- Armrests
- Headlights
- Power Dump
- Large Hole Screen
- Break Away Blades
- Adjustable Footrests
- Curb Jumper
- Deck Lift
- Deck Height Adjuster
- Deck Cuff
- No-Catch Deflector

Quick Reference Dimensions

<u>Tractor</u>	<u>Weight*</u>	<u>Overall Dimensions</u>
GHS Tractor	596	
GHS Tractor & Deck°	767	46.5" H x 37.25" W x 87" L

* Approximate pounds

° Dimensions and weight shown for models equipped with C36R deck (typical)



\$

List Price

Models

S18

The S18 continues to build on the Model S platform with an 18 HP engine and Walker's patented Grass Handling System with Thru-Shaft PTO. It is faster and more powerful, and with reduced weight the S18 is designed to be productive and efficient. Able to run 36 to 56 inch decks, the new S18 is the perfect choice for residential properties, gated yards, and demanding customers.

Type: Collection, 7 Bushel

Power: 18 HP

Engine: Briggs & Stratton Vanguard

Ideal Application: Residential Properties, Small Commercial Properties

Key Attributes: Compact, Agile

Key Engine Specifications

Manufacturer/Model.....	Briggs & Stratton Vanguard 2 Cyl.
Displacement	570 cc (34.8 cu. in.)
Max Power	18 HP at 3600 RPM
Max Torque	29.2 ft-lbs
Fuel.....	Gasoline (unleaded - min. 87 octane)
Fuel Capacity.....	4.0 U.S. gal (15.1 liter)
Cooling System.....	Air

Compatible Decks

- Collection - C36R, C42, C42R, C48R
- Discharge - S36, S42, S48, S56
- Mulching - M36, M42, M42B, M48
- Multi - U48

Attachments

- Single-Stage Snowblower
- Dethatcher
- Spyker Spreader Attachment
- Boom Sprayer
- Dozer Blade

Options

- 18 x 7.0-8 Turf Tire
- 18 x 8.5-10 Turf Tire
- 18 x 8.5-10 AT Tire
- 18 x 9.5-8 Turf Tire
- 18 x 7.0-8 Directional AT Tire
- Tire Chains
- Pneumatic Deck Tire
- Armrests
- Headlights
- Power Dump
- Large Hole Screen
- Break Away Blades
- Adjustable Footrests
- Curb Jumper
- Comfort Seat
- Deck Lift
- Deck Height Adjuster
- Deck Cuff
- No-Catch Deflector

Quick Reference Dimensions

<u>Traction</u>	<u>Weight*</u>	<u>Overall Dimensions</u>
GHS Tractor	636	
GHS Tractor & Deck°	827	46.5" H x 43.25" W x 89.25" L

* Approximate pounds

° Dimensions and weight shown for models equipped with C42 deck (typical)



\$

List Price

Models

C19

A durable design combined with a proven Kohler Command Pro CH620 engine, the C19 provides agility, maneuverability, and high-capacity mowing. It is a popular machine for commercial operators getting started in high-end property maintenance.

Type: Collection, 7 Bushel

Power: 19 HP

Engine: Kohler

Ideal Application: Residential

Properties, Commercial Properties

Key Attributes: Compact, Agile, Balance

Key Engine Specifications

Manufacturer/Model.....	Kohler Command Pro, CH620
Displacement	674 cc (41.1 cu. in.)
Max Power	19 HP @ 3600 RPM
Max Torque	35 ft.-lbs
Fuel.....	Gasoline (unleaded - min. 87 octane)
Fuel Capacity.....	4.0 U.S. gal (15.1 liter)
Cooling System.....	Air

Compatible Decks

- Collection - C36R, C42, C42R, C48, C48R
- Discharge - S36, S42, S48, S52, S56, S62
- Mulching - M36, M42, M42B, M48, M52K
- Multi - U48

Attachments

- Dozer Blade
- Single-Stage Snowblower
- Operator Soft Cab
- Boom Sprayer
- Dethatcher
- Spyker Spreader Attachment

Implements

- Implement Hitch
- Dozer Blade
- Rotary Broom
- Debris Blower
- Two-Stage Snowblower
- Loader Bucket

Options

- 18 x 7.0-8 Turf Tire
- 18 x 7.0-8 Directional AT Tire
- 18 x 8.5-10 AT Tire
- 18 x 9.5-8 Turf Tire
- 18 x 10.5-10 Turf Tire
- 18 x 11.0-10 AT Tire
- Tire Chains
- Pneumatic Deck Tire
- Comfort Seat
- Suspension Seat
- Armrests
- Headlights
- Break Away Blades
- Adjustable Footrests
- Curb Jumper
- Deck Cuff
- Deck Height Adjuster
- Deck Lift
- Power Dump
- Large Hole Screen
- Dump Bag
- Blower Lockout
- Tail Weights
- No-Catch Deflector

Quick Reference Dimensions

<u>Tractor</u>	<u>Weight*</u>	<u>Overall Dimensions</u>
Tractor	734	
Tractor & Deck ^o	925	47.5" H x 43.25" W x 89.25" L

* Approximate pounds

^o Dimensions and weight shown for models equipped with C42 deck (typical)



\$

List Price

Models

C19i

The C19i is a compact, high-production mower ideal for commercial and residential operators. With its compact size, 7 bushel grass catcher and powerful Kohler Command Pro ECH630 engine, the C19i is one of our most agile grass-handling, commercial mowers.

Type: Collection, 7 Bushel

Power: 19 HP

Engine: Kohler EFI

Ideal Application: Residential

Properties, Commercial Properties

Key Attributes: Efficient, Versatile, Balance

Key Engine Specifications

Manufacturer/Model..... Kohler Command Pro, ECH630

Displacement..... 694 cc (42.4 cu. in.)

Max Power..... 19 HP @ 3600 RPM

Max Torque..... 34.2 ft-lbs

Fuel..... Gasoline (unleaded - min. 87 octane)

Fuel Capacity..... 4.0 U.S. gal (15.1 liter)

Cooling System..... Air

Compatible Decks

- Collection - C36R, C42, C42R, C48, C48R, C52R
- Discharge - S36, S42, S48, S52, S56, S62
- Mulching - M36, M42, M42B, M48, M52K
- Multi - U48

Attachments

- Dozer Blade
- Operator Soft Cab
- Boom Sprayer
- Dethatcher
- Single-Stage Snowblower
- Spyker Spreader Attachment

Implements

- Implement Hitch
- Dozer Blade
- Rotary Broom
- Debris Blower
- Two-Stage Snowblower
- Loader Bucket

Options

- 18 x 7.0-8 Turf Tire
- 18 x 7.0-8 Directional AT Tire
- 18 x 8.5-10 AT Tire
- 18 x 9.5-8 Turf Tire
- 18 x 10.5-10 Turf Tire
- 18 x 11.0-10 AT Tire
- Tire Chains
- Pneumatic Deck Tire
- Comfort Seat
- Suspension Seat
- Armrests
- Headlights
- Break Away Blades
- Adjustable Footrests
- Curb Jumper
- Deck Cuff
- Deck Height Adjuster
- Deck Lift
- Power Dump
- Large Hole Screen
- Dump Bag
- Blower Lockout
- Tail Weights
- No-Catch Deflector

Quick Reference Dimensions

<u>Tractor</u>	<u>Weight*</u>	<u>Overall Dimensions</u>
Tractor	739	
Tractor & Deck°	930	47.5" H x 43.25" W x 89.25" L

* Approximate pounds

° Dimensions and weight shown for models equipped with C42 deck (typical)



\$

List Price

Models

T23

Popular with lawn maintenance professionals, the Model T23 offers the perfect balance of power, agility, durability and versatility for a wide range of mowing applications, making it a popular choice for over twenty-five years. The carbureted Kohler Command Pro CH680 engine provides maintainable power for any job. The comfort seat comes standard on this model.

Type: Collection, 10 Bushel
(Non-Collection option available)

Power: 23 HP

Engine: Kohler

Ideal Application: Commercial Properties, Multi-Unit Complexes

Key Attributes: Compact, Agile, Versatile

Key Engine Specifications

Manufacturer/Model.....	Kohler Command Pro CH680
Displacement	674 cc (41.1 cu. in.)
Max Power	22.5 HP @ 3600 RPM
Max Torque	37.9 ft-lbs
Fuel.....	Gasoline (unleaded - min. 87 octane)
Fuel Capacity.....	4.7 U.S. gal (17.8 liter)
Cooling System.....	Air

Compatible Decks

- Collection - C36R, C42, C42R, C48, C48R, C52R
- Discharge - S36, S42, S48, S52, S56, S62, S74
- Mulching - M36, M42, M42B, M48, M52, M52K
- Multi - U48

Attachments

- Dozer Blade
- Operator Soft Cab
- Boom Sprayer
- Dethatcher
- Single-Stage Snowblower
- Spyker Spreader Attachment

Implements

- Implement Hitch
- Dozer Blade
- Rotary Broom
- Debris Blower
- Two-Stage Snowblower
- Loader Bucket

Options

- 18 x 7.0-8 Turf Tire
- 18 x 7.0-8 Directional AT Tire
- 18 x 8.5-10 Turf Tire
- 18 x 8.5-10 AT Tire
- 18 x 10.5-10 Turf Tire
- 18 x 11.0-10 AT Tire
- Tire Chains
- Pneumatic Deck Tire
- Comfort Seat*
- Suspension Seat
- Armrests
- Headlights
- Instrument Panel Cover
- Break Away Blades
- Adjustable Footrests
- Curb Jumper
- Deck Cuff
- Deck Height Adjuster
- Deck Lift
- Hi-Dump™
- Power Dump
- No Catch Deflector
- Large Hole Screen
- Dump Bins
- Dump Bag
- Utility Bed
- Tail Wheel Lock
- Blower Lockout
- Tail Weights
- Single Wide Tail Wheel
- Spread Axle Tail Wheels

* Standard on this model.

Quick Reference Dimensions

<u>Tractor</u>	<u>Weight*</u>	<u>Overall Dimensions</u>
GHS Tractor	790	
GHS Tractor & Deck°	1009	50" H x 49.25" W x 93" L

* Approximate pounds

° Dimensions and weight shown for models equipped with C48 deck (typical)



\$ _____
List Price (GHS)

\$ _____
List Price (NC)

Models

T27i

A powerful air-cooled engine with EFI technology delivers a responsive, fuel efficient performance. This mower provides powerful acceleration and throttle response. Built-in diagnostics and service light on the instrument panel simplify troubleshooting.

Type: Collection, 10 Bushel
(Non-Collection option available)

Power: 27 HP

Engine: Kohler EFI

Ideal Application: Commercial Properties, Multi-Unit Complexes

Key Attributes: Compact, Agile, Versatile

Key Engine Specifications

Manufacturer/Model..... Kohler Command Pro ECH740, EFI
 Displacement 747 cc (45.6 cu. in.)
 Max Power 27 HP @ 3600 RPM
 Max Torque 40.0 ft-lbs
 Fuel..... Gasoline (unleaded - min. 87 octane)
 Fuel Capacity..... 4.7 U.S. gal (17.8 liter)
 Cooling System..... Air

Compatible Decks

- Collection - C36R, C42, C42R, C48, C48R, C52R
- Discharge - S36, S42, S48, S52, S56, S62, S74
- Mulching - M36, M42, M42B, M48, M52, M52K
- Multi - U48

Attachments

- Dozer Blade
- Operator Soft Cab
- Boom Sprayer
- Dethatcher
- Single-Stage Snowblower
- Spyker Spreader Attachment

Implements

- Implement Hitch
- Dozer Blade
- Rotary Broom
- Debris Blower
- Two-Stage Snowblower
- Loader Bucket

Options

- 18 x 7.0-8 Turf Tire
- 18 x 7.0-8 Directional AT Tire
- 18 x 8.5-10 Turf Tire
- 18 x 8.5-10 AT Tire
- 18 x 10.5-10 Turf Tire
- 18 x 11.0-10 AT Tire
- Tire Chains
- Pneumatic Deck Tire
- Comfort Seat*
- Suspension Seat
- Armrests
- Headlights
- Instrument Panel Cover
- Break Away Blades
- Adjustable Footrests
- Curb Jumper
- Deck Cuff
- Deck Height Adjuster
- Deck Lift
- Hi-Dump™
- Power Dump
- No Catch Deflector
- Large Hole Screen
- Dump Bins
- Dump Bag
- Utility Bed
- Tail Wheel Lock
- Blower Lockout
- Tail Weights
- Single Wide Tail Wheel
- Spread Axle Tail Wheels

* Standard on this model.

Quick Reference Dimensions

Tractor	Weight*	Overall Dimensions
GHS Tractor	787	
GHS Tractor & Deck°	1006	50" H x 49.25" W x 93" L

* Approximate pounds

° Dimensions and weight shown for models equipped with C48 deck (typical)



\$	_____
	List Price (GHS)
\$	_____
	List Price (NC)

Models

D21d

The D21d is a premium commercial GHS mower with impressive industrial power and agile, premium-quality mowing. Featuring the Kubota D722 liquid cooled, diesel engine, and a standard Grammer suspension seat, the D21d is designed for all day comfort and long machine life.

Type: Collection, 10 Bushel
(Non-Collection option available)

Power: 20.9 HP

Engine: Kubota Diesel

Ideal Application: Commercial, Municipal, and Institutional Properties

Key Attributes: Efficient, High Torque, High Production

Key Engine Specifications

Manufacturer/Model.....	Kubota, D722, 3 cyl.
Displacement.....	719 cc (43.9 cu. in.)
Max Power.....	20.9 HP @ 3600 RPM
Max Torque.....	34 ft-lbs
Fuel.....	Diesel Fuel (2-D)
Fuel Capacity.....	4.7 U.S. gal (17.8 liter)
Cooling System.....	Liquid, Radiator

Compatible Decks

- Collection - C36R, C42, C42R, C48, C48R, C52R
- Discharge - S36, S42, S48, S52, S56, S62, S74
- Mulching - M36, M42, M42B, M48, M52, M52K
- Multi - U48

Attachments

- Dozer Blade
- Operator Soft Cab
- Boom Sprayer
- Dethatcher
- Single-Stage Snowblower
- Spyker Spreader Attachment

Implements

- Implement Hitch
- Dozer Blade
- Rotary Broom
- Debris Blower
- Two-Stage Snowblower
- Loader Bucket

Options

- 18 x 7.0-8 Turf Tire
- 18 x 7.0-8 Directional AT Tire
- 18 x 8.5-10 Turf Tire
- 18 x 8.5-10 AT Tire
- 18 x 10.5-10 Turf Tire
- 18 x 11.0-10 AT Tire
- Tire Chains
- Pneumatic Deck Tire
- Comfort Seat
- Suspension Seat*
- Armrests
- Headlights
- Instrument Panel Cover
- Break Away Blades
- Adjustable Footrests
- Curb Jumper
- Deck Cuff
- Deck Height Adjuster
- Deck Lift
- Hi-Dump™
- Power Dump
- No-Catch Deflector
- Large Hole Screen
- Dump Bins
- Dump Bag
- Utility Bed
- Tail Wheel Lock
- Blower Lockout
- Tail Weights
- Single Wide Tail Wheel
- Spread Axle Tail Wheels

* Standard on this model.

Quick Reference Dimensions

<u>Tractor</u>	<u>Weight*</u>	<u>Overall Dimensions</u>
GHS Tractor	959	
GHS Tractor & Deck°	1178	50" H x 49.25" W x 93" L

* Approximate pounds

° Dimensions and weight shown for models equipped with C48 deck (typical)



\$	_____
	List Price (GHS)
\$	_____
	List Price (NC)

Models

R21

The R21 is the ideal machine for residential properties. Featuring a powerful 21 HP Kohler KT620 with Smart-Choke technology, this machine is a premium Walker Mower priced for residential owners. Tilt-open seat and tilt-up deck are designed for easy maintenance access.

Type: Non-Collection

Power: 21 HP

Engine: Kohler

Ideal Application: Residential Properties

Key Attributes: Agile, Accessible, Compact

Key Engine Specifications

Manufacturer/Model.....	Kohler KT620
Displacement.....	660 cc (40.3 cu. in.)
Max Power.....	21 HP @ 3600 RPM
Max Torque.....	35.9 ft-lbs
Fuel.....	Gasoline (unleaded - min. 87 octane)
Fuel Capacity.....	3 gal (11.36 liter)
Cooling System.....	Air

Compatible Decks

- Discharge - S42-R, S48-R
- Mulching - S42-R Mulching Kit, S48-R Mulching Kit

Options

- Comfort Seat
- Headlights
- Tow Hitch
- Accelerator™ Grass Catcher

Quick Reference Dimensions

<u>Tractor</u>	<u>Weight*</u>	<u>Overall Dimensions</u>
Tractor	404	
Tractor and 42" Deck	575	42" H x 55" W x 93" L
Tractor and 48" Deck	593	42" H x 60" W x 96" L

*Approximate pounds



\$

List Price

Models

B18

The productive B18 does its best work in tight spaces and on hillsides but is also at home on flat, wide open turf. Using Walker add-ons will keep it busy all year long at home or in commercial work.

Type: Non-Collection

Power: 18 HP

Engine: Briggs & Stratton

Ideal Application: Residential Properties

Key Attributes: Hillside Stability, Compact, Agile

Key Engine Specifications

Manufacturer/Model.....	Briggs & Stratton Vanguard, 2 cyl.
Displacement.....	570 cc (34.8 cu. in.)
Max Power.....	18 HP @ 3600 RPM
Max Torque.....	29.5 ft-lbs
Fuel.....	Gasoline (unleaded - min. 87 octane)
Fuel Capacity.....	4.0 U.S. gal (15.1 liter)
Cooling System.....	Air

Compatible Decks

- Discharge - S36, S42, S48, S56
- Mulching - M36, M42, M42B, M48

Attachments

- Dozer Blade
- Single-Stage Snowblower
- Boom Sprayer
- Spyker Spreader Attachment
- Dethatcher

Options

- 18 x 7.0-8 Turf Tire
- 18 x 7.0-8 Directional AT Tire
- 18 x 8.5-10 AT Tire
- 18 x 9.5-8 Turf Tire
- 18 x 10.5-10 Turf Tire
- 18 x 11.0-10 AT Tire
- Tire Chains
- Pneumatic Deck Tire
- Comfort Seat
- Suspension Seat
- Armrests
- Headlights
- Break Away Blades
- Adjustable Footrests
- Curb Jumper
- Deck Cuff
- Deck Height Adjuster
- Deck Lift
- Utility Bed
- Tail Weights

Quick Reference Dimensions

<u>Tractor</u>	<u>Weight*</u>	<u>Overall Dimensions</u>
Tractor	584	
Tractor & Deck ^o	790	39.5" H x 49" W x 90.25" L

* Approximate pounds

^o Dimensions and weight shown for models equipped with M48 deck (typical)



\$

List Price

Models

B19

A simple Kohler Command Pro CH621 powers the B19. Climb hills and manage variable terrain while leaving a beautiful cut with the well balanced B19.

Type: Non-Collection

Power: 19 HP

Engine: Kohler

Ideal Application: Residential and Commercial Properties

Key Attributes: Hillside Stability, Compact, Agile

Key Engine Specifications

Manufacturer/Model.....	Kohler CH621, 2 cyl.
Displacement.....	674 cc (41.1 cu. in.)
Max Power.....	19 HP @ 3600 RPM
Max Torque.....	35.0 ft-lbs
Fuel.....	Gasoline (unleaded - min. 87 octane)
Fuel Capacity.....	4.0 U.S. gal (15.1 liter)
Cooling System.....	Air

Compatible Decks

- Discharge - S36, S42, S48, S52, S56, S62
- Mulching - M36, M42, M42B, M48, M52K

Attachments

- Dozer Blade
- Single-Stage Snowblower
- Boom Sprayer
- Spyker Spreader Attachment
- Dethatcher

Options

- 18 x 7.0-8 Turf Tire
- 18 x 7.0-8 Directional AT Tire
- 18 x 8.5-10 AT Tire
- 18 x 9.5-8 Turf Tire
- 18 x 10.5-10 Turf Tire
- 18 x 11.0-10 AT Tire
- Tire Chains
- Pneumatic Deck Tire
- Comfort Seat
- Suspension Seat
- Armrests
- Headlights
- Break Away Blades
- Adjustable Footrests
- Curb Jumper
- Deck Cuff
- Deck Height Adjuster
- Deck Lift
- Utility Bed
- Tail Weights

Quick Reference Dimensions

<u>Tractor</u>	<u>Weight*</u>	<u>Overall Dimensions</u>
Tractor	583	
Tractor & Deck ^o	789	39.5" H x 49" W x 90.75" L

* Approximate pounds

^o Dimensions and weight shown for models equipped with M48 deck (typical)



\$

_____ List Price

Models

B23i

The B23i features a powerful 23 HP, electronic fuel-injected Kohler Command Pro ECH730 engine delivering impressive power and performance along with top-of-the-line efficiency in a compact package. The comfort seat comes standard on this model.

Type: Non-Collection

Power: 23 HP

Engine: Kohler EFI

Ideal Application: Commercial and Rural Properties

Key Attributes: Hillside Stability, Efficiency, High Production

Key Engine Specifications

Manufacturer/Model..... Kohler Command Pro, ECH730, EFI
Displacement 747 cc (45.6 cu. in.)
Max Power 23 HP @ 3600 RPM
Max Torque 38.1 ft-lbs
Fuel..... Gasoline (unleaded - min. 87 octane)
Fuel Capacity..... 4.7 U.S. gal (17.8 liter)
Cooling System..... Air

Compatible Decks

- Discharge - S36, S42, S48, S52, S56, S62, S74
- Mulching - M36, M42, M42B, M48, M52, M52K

Attachments

- Dozer Blade
- Single-Stage Snowblower
- Boom Sprayer
- Spyker Spreader Attachment
- Dethatcher

Options

- 18 x 7.0-8 Turf Tire
- 18 x 7.0-8 Directional AT Tire
- 18 x 8.5-10 AT Tire
- 18 x 9.5-8 Turf Tire
- 18 x 10.5-10 Turf Tire
- 18 x 11.0-10 AT Tire
- Tire Chains
- Pneumatic Deck Tire
- Suspension Seat
- Armrests
- Headlights
- Break Away Blades
- Adjustable Footrests
- Curb Jumper
- Deck Cuff
- Deck Height Adjuster
- Deck Lift
- Utility Bed
- Tail Weights
- Big Tire Kit

Quick Reference Dimensions

<u>Tractor</u>	<u>Weight*</u>	<u>Overall Dimensions</u>
Tractor	588	
Tractor & Deck ^o	797	39.5" H x 49" W x 90.75" L

* Approximate pounds

^o Dimensions and weight shown for models equipped with M48 deck (typical)



\$

List Price

Models

B27i

This higher horsepower version of the Model B adds a Kohler 26.5 HP, EFI engine and includes a clamshell body and Ogura electric clutch, resulting in a powerful, efficient package for running larger decks.

Type: Non-Collection
Power: 26.5 HP
Engine: Kohler EFI

Ideal Application: Commercial and Rural Properties
Key Attributes: Hillside Stability, Efficiency, High Production

Key Engine Specifications

Manufacturer/Model..... Kohler Command Pro ECH749, EFI
Displacement..... 747 cc (45.6 cu. in.)
Max Power..... 26.5 HP @ 3600 RPM
Max Torque..... 40 ft-lbs
Fuel..... Gasoline (unleaded - min. 87 octane)
Fuel Capacity..... 4.7 U.S. gal (17.8 liter)
Cooling System..... Air

Compatible Decks

- Discharge - S36, S42, S48, S52, S56, S62, S74
- Mulching - M36, M42, M42B, M48, M52, M52K

Attachments

- Dozer Blade
- Single-Stage Snowblower
- Boom Sprayer
- Spyker Spreader Attachment
- Dethatcher

Options

- 18 x 7.00-8 Turf Tire
- 18 x 7.00-8 AT Tire
- 18 x 8.5-10 AT Tire
- 18 x 9.5-8 Turf Tire
- 18 x 10.5-10 Turf Tire
- 18 x 11.00-10 AT Tire
- Tire Chains
- Pneumatic Deck Tire
- Suspension Seat
- Armrests
- Headlights
- Break Away Blades
- Adjustable Footrests
- Curb Jumper
- Deck Cuff
- Deck Height Adjuster
- Deck Lift
- Utility Bed
- Tail Weights
- Big Tire Kit

Quick Reference Dimensions

<u>Tractor</u>	<u>Weight*</u>	<u>Overall Dimensions</u>
Tractor	610	
Tractor & Deck°	819	39.5" H x 49" W x 90.75" L

* Approximate pounds

° Dimensions and weight shown for models equipped with M48 deck (typical)



\$

_____ List Price

Models

H24d

For discerning operators, the H24d delivers an impressive package. Featuring a Kohler KDW1003 diesel engine with 1028 cubic centimeters of displacement, the H24d provides consistent power and smooth, quiet operation. The self-cleaning radiator, 9.4 gallon fuel capacity, and Grammer suspension seat allow for comfortable extended operation. The standard utility bed and optional add-ons make the H24d a versatile, year-round performer.

Type: Non-Collection

Power: 23.4 HP

Engine: Kohler Diesel

Ideal Application: Commercial, Municipal, and Institutional Properties

Key Attributes: Efficient, High Torque, High Production

Key Engine Specifications

Manufacturer/Model.....	Kohler KDW1003
Displacement.....	1028 cc (62.7 cu. in.)
Max Power.....	23.7 HP @ 3600 RPM
Max Torque.....	36.8 ft-lbs
Fuel.....	Diesel (2-D)
Fuel Capacity.....	9.4 U.S. gal (35.6 liter)
Cooling System.....	Liquid, Radiator

Compatible Decks

- Rear Discharge - R52, R64
- Side Discharge - S48¹, S52¹, S56¹, S61, S62¹, S74¹
- Mulch - M48¹, M52K¹, M61K

Attachments

- ROPS Kit (standard)
- Operator Hard Cab

Implements

- Implement Hitch
- Two-Stage Snowblowers
- Dozer Blades
- Rotary Broom

Options

- 22 x 10.5-12 Turf Tire
- 23 x 10.5-12 Directional AT Tire
- 23 x 10.5-12 AT Tire
- Pneumatic Deck Tire
- Power Tilt-Up® Deck
- Headlights
- Break Away Blades
- Tail Weights

Quick Reference Dimensions

<u>Tractor</u>	<u>Weight*</u>	<u>Overall Dimensions</u>
Tractor	997	
Tractor, Deck, ROPS°	1434	50.5" H x 66" W x 107" L

¹ Requires a deck Arm Adapter Kit (P/N 2430-10)

* Approximate pounds

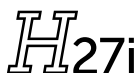
° Dimensions and weight shown for models equipped with R64 deck (typical), ROPS folded.



\$

_____ List Price

Models



Two strong design advantages—out front mowing and Kohler’s Delphi electronic fuel injection system—have been brought together in the H27i. Featuring a Kohler Command Pro ECH749 engine, the H27i is an ideal combination of horsepower, productivity and fuel efficiency.

Type: Non-Collection

Power: 27 HP

Engine: Kohler EFI

Ideal Application: Commercial, Rural, and Large Properties, Field Cutting

Key Attributes: Versatile, Efficient, High Production

Key Engine Specifications

Manufacturer/Model.....	Kohler Command Pro ECH749, EFI
Displacement.....	747 cc (45.6 cu. in.)
Max Power.....	26.5 HP @ 3600 RPM
Max Torque.....	40 ft-lbs
Fuel.....	Gasoline (unleaded - min. 87 octane)
Fuel Capacity.....	9.4 U.S. gal (35.6 liter)
Cooling System.....	Air

Compatible Decks

- Rear Discharge - R52, R64
- Side Discharge - S48¹, S52¹, S56¹, S61, S62¹, S74¹
- Mulch - M48¹, M52K¹, M61K

Attachments

- ROPS Kit
- Operator Hard Cab

Implements

- Implement Hitch
- Two-Stage Snowblowers
- Dozer Blades
- Rotary Broom

Options

- 22 x 10.5-12 Turf Tire
- 23 x 10.5-12 Directional AT Tire
- 23 x 10.5-12 AT Tire
- Pneumatic Deck Tire
- Power Tilt-Up[®] Deck
- Headlights
- Break Away Blades
- Tail Weights

Quick Reference Dimensions

<u>Tractor</u>	<u>Weight*</u>	<u>Overall Dimensions</u>
Tractor	748	
Tractor & Deck [°]	1185	46.5" H x 66" W x 107" L

¹ Requires a deck Arm Adapter Kit (P/N2430-10)

* Approximate pounds

[°] Dimensions and weight shown for models equipped with R64 deck (typical)



_____ List Price

Models



Powered by a 993cc big block Vanguard EFI engine, the H37i is a powerful and efficient machine for the professional user. Its engine with high capacity air cooling system, big 5 inch diameter Donaldson air cleaner, Grammer suspension seat, and fully articulating decks means the H37i can mow complex properties easier, in harsh conditions longer. And with the optional Model H Power Tilt-Up deck, maintenance and storage are even easier.

Type: Non-Collection

Power: 37 HP

Engine: Briggs & Stratton Vanguard

Ideal Application: Commercial, Rural, and Large Properties, Field Cutting

Key Attributes: Powerful, Efficient, High Production

Key Engine Specifications

Manufacturer/Model.....	Briggs & Stratton Vanguard Big Block
Displacement	993 cc (60.6 cu. in.)
Max Power	37 HP @ 3650 RPM
Max Torque	(Not provided by manufacturer)
Fuel.....	Gasoline (unleaded - min. 87 octane)
Fuel Capacity.....	9.4 gal (35.6 liter)
Cooling System.....	Air

Compatible Decks

- Rear Discharge - R52, R64
- Side Discharge - S48¹, S52¹, S56¹, S61, S62¹, S74¹
- Mulch - M48¹, M52K¹, M61K

Attachments

- ROPS Kit
- Operator Hard Cab

Implements

- Implement Hitch
- Dozer Blades
- Two-Stage Snowblowers
- Rotary Broom

Options

- 22 x 10.5-12 Turf Tire
- 23 x 10.5-12 Directional AT Tire
- 23 x 10.5-12 AT Tire
- Headlights
- Tail Weights
- Break Away Blades
- Power Tilt-Up® Deck
- Pneumatic Deck Tire
- Hard Cab Heater

Quick Reference Dimensions

<u>Tractor</u>	<u>Weight*</u>	<u>Overall Dimensions</u>
Tractor	778	
Tractor & Deck ^o	1215	46.5" H x 66" W x 108" L

¹ Requires a deck Arm Adapter Kit (P/N2430-10)

* Approximate pounds

^o Dimensions and weight shown for models equipped with R64 deck (typical)



List Price

Deck Compatibility

Collection Decks

	MS	MC	MT	MD	MR	MB	MH
C36R	●	●	●	●			
C42	●	●	●	●			
C48	■	●	●	●			
C52R		●	●	●			

■ Model S18 only, C48R deck only.

● Model C19i only.

Discharge Decks

	MS	MC	MT	MD	MR	MB	MH
S36	●	●	●	●		●	
S42	●	●	●	●		●	
S42/48-R					●		
S48	■	●	●	●		●	▲
S52		●	●	●		^	▲
R52							●
R64							●
S56	■	●	●	●		●	▲
S61							●
S62		●	●	●		^	▲
S74			●	●		#	▲

^ B19, B23i, and B27i can use DS52 and DS62

B23i and B27i can use DS74

▲ Requires Deck Arm Adapter Kit P/N 2430-10

■ Model S18 only

Mulching Decks/Kits

	MS	MC	MT	MD	MR	MB	MH
M36	●	●	●	●		●	
M42	●	●	●	●		●	
M42B	●	●	●	●		●	
M48	■	●	●	●		●	▲
S42/48-RK					●		
M52			●	●		#	
M52K		●	●	●		^	▲
M61K							●

▲ Requires Deck Arm Adapter Kit P/N 2430-10

^ B19, B23i, and B27i can use S52 w/ Mulch Kit

■ Model S18 only

B23i and B27i can use M52

Multi Deck

	MS	MC	MT	MD	MR	MB	MH
U48	■	●	●	●			

■ Model S18 only

Collection Decks

- Available in 36", 42", 48" and 52"
- Two blades, gear-driven
- Decks come standard with "no-flat" tires from factory

Options

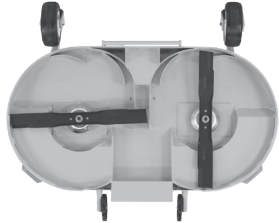
- Pneumatic Deck Tire
- Deck Height Adjuster
- Deck Lift
- Adjustable Footrests
- Deck Cuff

STANDARD ROTATION DECKS

C42 and C48 decks use standard rotation blades, counter-rotating toward the center of the deck to throw material directly into the discharge chute.



C42 \$ _____



C48 \$ _____

REVERSE ROTATION DECKS

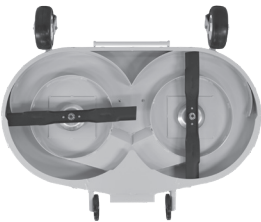
C36R, C42R, C48R and C52R decks use reverse rotation blades—cutting the middle of the deck first and rotating away from the center. Reverse rotation decks are easily identified by the taper of the deck housing at the rear of the deck going into the chute.



C36R \$ _____



C42R \$ _____



C48R \$ _____



C52R \$ _____

Discharge Decks

SIDE DISCHARGE DECKS

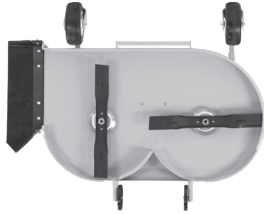
- Available in 36", 42", 48", 52", 56", 61", 62" and 74"
- Decks come standard with "no-flat" tires from factory (pneumatic tires standard on S52, S56, S61, S62, S74)

Options

- Pneumatic Deck Tire
- Deck Height Adjuster
- Adjustable Footrests
- Curb Jumper
- Break Away Blades
- Power Tilt-Up™*



S36 \$ _____



S42 \$ _____



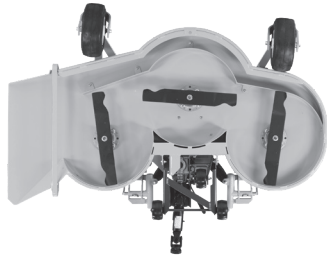
S42-R** \$ _____



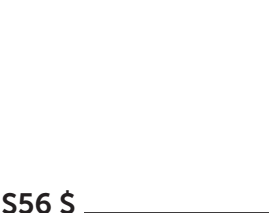
S48-R** \$ _____



S48 \$ _____



S52 \$ _____



S56 \$ _____

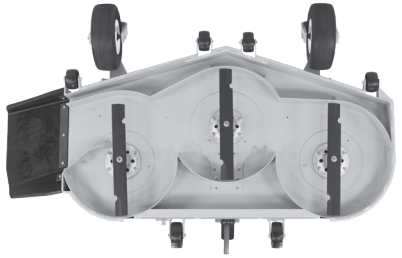


* Retrofittable to Model H with S61, R52, R64 with adjustable footrests.
 ** Fits Model R21 only.

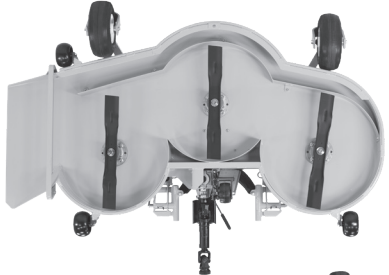
Discharge Decks (continued)

SIDE DISCHARGE DECKS (CONTINUED)

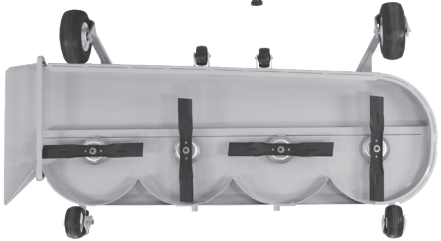
S61 \$ _____



S62 \$ _____



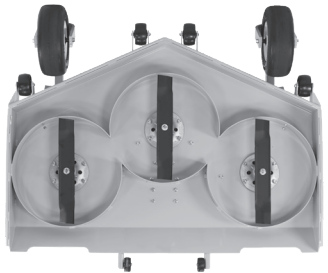
S74 \$ _____



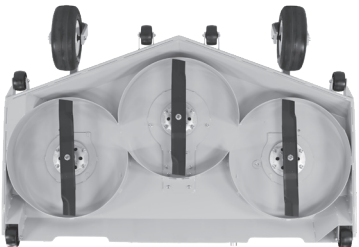
REAR DISCHARGE DECKS

- 52" or 64" rear discharge
- Belt-driven, three blade design
- Deck height adjuster standard
- Footrests standard
- Power Tilt-Up™ for Model H

R52 \$ _____



R64 \$ _____

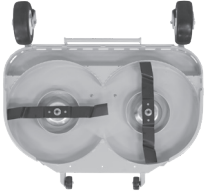


Mulching Decks/Kits

- Available in 36", 42", 48", and 52"
- Decks with available Mulching Kits: S42-R (P/N 1692-10), S48-R (P/N 1692-11), S52 (P/N 8691), S61 (P/N 2692-1) use bolt-on kits to convert side discharge decks to mulching operation. See individual tractor descriptions for deck compatibility.

Options

- Pneumatic Deck Tire
- Deck Height Adjuster
- Adjustable Footrests
- Curb Jumper
- Power Tilt-Up™ for Model H



M36 \$ _____



M42 \$ _____



M42B \$ _____



S42-R \$ _____



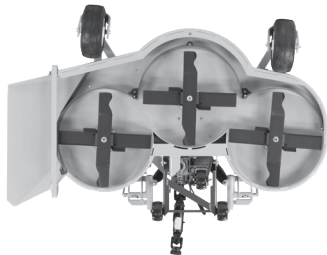
S48-R \$ _____



M48 \$ _____

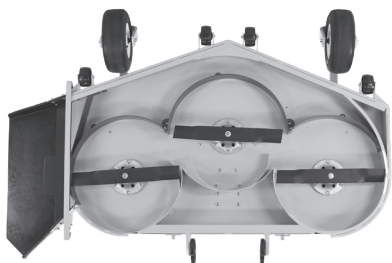


M52 \$ _____



M52K \$ _____

Mulching Decks (continued)



M61K \$ _____

Multi-Decks

- The U48 Multi-Deck has the option to collect, side discharge, or mulch. It has bolt on baffles to easily change function of deck. Belt-driven, this deck is quiet and durable. Compatible with Models S18, C, D and T.



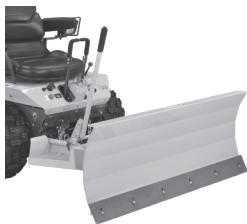
U48 \$ _____

Attachments

Attachments are installed directly onto the tractor (like decks) without the need for an implement hitch.

48" DOZER BLADE ATTACHMENT

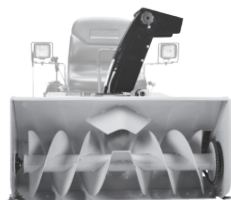
- Incorporates Walker designed blade and quick angle adjust
- Includes integrated hitch with manual lift
- Optional power lift kit available (P/N 6622-17)
- Fits all models (except Model H)
- P/N A32 (req. Kit #4300-16 for Models S, B or Kit #5628-10 for Models C, D, T)
- Optional Polyurethane Wear Edge P/N 6625-2



A32 \$ _____

36" SINGLE-STAGE SNOWBLOWER

- High-speed, clog-resistant auger throws snow up to 20 feet
- Includes integrated hitch with manual lift
- 180° manual directional chute
- Fits all models except Model H
- 18 x 7.0-8 Directional AT Tire recommended
- P/N A11 (req. Kit #4300-16 for Models S and B or Kit #5628-10 for Models C, D, T)



A11 \$ _____

OPERATOR SOFT CAB

- Shields operator from winter weather when using Snow Blower, Rotary Broom, and Dozer Blade
- Hinged door with glass windshield, electric windshield wiper, and LED headlights
- Requires Implement Hitch H10
- P/N A13 - Model C
- P/N A14 - Models T and D



A13 \$ _____

A14 \$ _____

Front Cab Extension Flap (P/N 7661-4)

- Protects operator when using Dozer Blade - not recommended for implements using a PTO drive shaft

7661-4 \$ _____



OPERATOR HARD CAB

- Shields operator from winter weather when using Snow Blower, Rotary Broom, and Dozer Blade
- Hinged door with glass windshield, electric windshield wiper, headlights, and circulation fan
- Available for use on Model H tractors
- ROPS required
- Blade Angle Adjustment kit (P/N 6623-10) required for use with 60" Dozer Blade (P/N H16)
- Snowblower Chute Control Kit P/N 6623-4 required for use with 50" Snowblower P/N H17
- P/N A33



A33 \$ _____

Attachments (continued)

OPERATOR HARD CAB HEATER

- The Hard Cab Heater for the Model H37i keeps the operator warm and comfortable in the snow and freezing rain while also defrosting the windshield.
- P/N 2200-24



2200-24 \$ _____

TAIL WEIGHT

Counterbalance for add-ons:

- Model B - 10-lb P/N 2647-3
- Models C, D, T - 85-lb P/N 7647
- Extra 10-lb weight, Models D, T, B P/N 7647-5
- Model H - 50-lb P/N 2647-10
- Model H (new axle) - 55-lb P/N 2647-11
- Extra 55-lb weight, Model H P/N 2647-6
- Not compatible with H24d



2647-3 \$ _____ **2647-10 \$** _____

7647 \$ _____ **2647-11 \$** _____

7647-5 \$ _____ **2647-6 \$** _____

ROPS

- Optional bolt-on kit (standard on H24d)
- Stationary/foldable bar
- Seat belt required when ROPS installed
- Seat belt included with A30 and A34 kits
- A37 kit requires the correct A37 seat belt kit based on the operator seat used (see A37 Seat Belt Kits below)
- P/N A30 - H27i
- P/N A34 - H37i
- P/N A37 - Models C, T, D



A30 \$ _____

A34 \$ _____

A37 \$ _____

A37 SEAT BELT KITS

Seat belts are required with the A37 ROPS kit. Seat belt must not be used without a ROPS kit installed.

- Suspension Seat (6103-14) P/N 2302-8
- Standard Seat (5103) P/N 5103-9
- Comfort Seat (6104-31) P/N 6104-7



2302-8 \$ _____

5103-9 \$ _____

6104-7 \$ _____

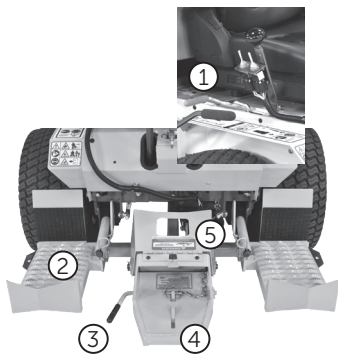
Implements

IMPLEMENT HITCH

Five implements mount interchangeably on the Walker Mower using the quick-change hitch system. The Implement Hitch replaces the mower deck and installs on the tractor in just a few minutes. Implements then slide onto the hitch and lock in place with the flip of a lever for true "quick change" capability. The hitch assembly includes operator footrests and an electric power lift. A switch raises and lowers implements and is quadrant mounted on the Forward Speed Control lever for convenient operation. (Note: Tail weight counterbalance is required for lifting implements. See Tail Weight options on Page 26).

1. Lift Control Switch
2. Operator Footrest
3. Hitch Locking Lever
4. Implement Hitch Tongue
5. PTO Cover

- Fits on all Walker riding tractors (except Models S, B, or R)
- For use with Debris Blower, Rotary Broom, Dozer Blades, Loader Bucket, Two-Stage Snowblowers
- P/N H10 Models C, T, D
- P/N H19 Model H



H10 \$ _____

H19 \$ _____

42" & 50" SNOWBLOWER

- Powerful two-stage blower
- Discharge spout has 180° of adjustment from the operator seat
- Throws snow up to 40 feet
- Implement Hitch required
- Snowblower Chute Control Kit P/N 6623-4 required for use with Operator Hard Cab
- Available for use on Models C, D, T, H
- P/N H12 - 42" Model C, D, T
- P/N H17 - 50" Model H



H12 \$ _____

H17 \$ _____

47" & 60" ROTARY BROOM

- Five-position angle head
- Useful for lawn dethatching and raking, and for sweeping debris or light snow on hard surfaces
- Implement Hitch required
- P/N H13 - 47" Models C, D, T
- P/N H20 - 60" Model H



H13 \$ _____

H20 \$ _____

Gauge Wheels for Rotary Broom

- Two side-mounted 6" wheels control depth of engagement
- Implement Hitch required
- P/N I391 - 47" Broom
- P/N I399 - 60" Broom

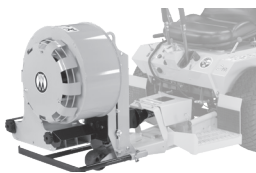
I391 \$ _____

Implements (continued)

DEBRIS BLOWER

- 13-1/2" blower with 125-MPH velocity
- Available for use on Walker riding tractor Models C, D, T
- Implement Hitch required
- P/N H14

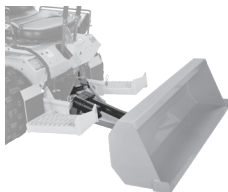
H14 \$ _____



LOADER BUCKET

- Versatile landscaping tool will push, scoop, haul and grade dirt, gravel and mulch
- Lifts approximately 180 lbs and 2.25 cubic feet of material with 14" ground clearance
- Available for use on Walker riding tractor Models C, D, T
- Implement Hitch required
- P/N H18

H18 \$ _____

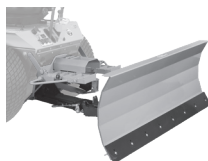


48" & 60" DOZER BLADE

- Five-angle positioning and spring trip action
- Useful for moving snow, dirt and gravel
- Available for use on all Walker riding tractors (except Models S, B, or R; see A32 Dozer Blade Attachment for Models S or B)
- Implement Hitch required
- Optional Polyurethane Wear Edge P/N 6625-10 for 48", P/N 6625-11 for 60"
- Blade Angle Adjustment kit (P/N 6623-10) required for use with Operator Hard Cab (P/N A33)
- P/N H11 - 48" Models C, T, D, H
- P/N H16 - 60" Models T, D, H

H11 \$ _____

H16 \$ _____



Operator Options

SUSPENSION SEAT

- Standard with armrests on Models D and H
- Full-spring suspension with dampening
- Adjustments for back angle, lumbar support, and operator weight
- Available for Models B, C, D, T, H
- Models B P/N 4103-1
- Models C P/N 6103-43
- Models T P/N 6103-46
- Models D and H P/N 6103-14



4103 \$ _____

6103-24 \$ _____

6103-43 \$ _____

6103-14 \$ _____

Operator Options (continued)

COMFORT SEAT

- Standard on T23, T27i, and B23i
- Removable/replaceable covers
- Optional armrests (see armrests below)
- Available for all tractors (except Model H)
- Models T and D P/N 6104-8
- Models B, S, C P/N 6104-9
- Model R P/N 6104-10
- Does not work with manual deck lift



6104-8\$ _____

6104-10\$ _____

6104-9\$ _____

STANDARD SEAT

- Standard on Models S, C, B18, B19, and R
- Large, contour molded seat
- Models S, B18, and B19 P/N 5103
- Model C P/N 5103-3



5103 \$ _____

5103-3 \$ _____

ARMRESTS

- Used for operator comfort and security,
- Fold up when not in use
- Kit # 5885 - fits Standard Seat
- Kit # 6104-6 - fits Comfort Seat



5885 \$ _____

6104-6 \$ _____

CUP HOLDER

- Front-mount design fits on machines with a Tilt-up latch (models S, C, T, D, B, and H)
- Frame is powder-coated metal and incorporates rubber tabs to secure different sized and shaped cups and tumblers up to 3.25 inches in diameter
- P/N 5744-9



5744-9 \$ _____

HEADLIGHTS

- LED headlights have a durable, cast aluminum housing with 5 led lamps in each light
- Shock isolated mounting arm includes integral light guards
- P/N 5989-14 - Model S
- P/N 5989-13 - Models B, C, H27i, H24d
- P/N 7989-14 - Models D and T
- P/N 2989-12 - Models H37i
- P/N 5989-15 - Model R



5989-13 \$ _____

5989-14 \$ _____

7989-14 \$ _____

5989-15 \$ _____

2989-12 \$ _____

Operator Options (continued)

INSTRUMENT PANEL COVER

- Protects Model D and T instrument panel when parked outdoors or trailered in rain or snow
- P/N 7307-2



7307-2 \$ _____

Deck Attachments

40" SPRING TINE DETHATCHER

- Clips on the front of 36", 42", 48", or 52" gear driven decks with no tools
- When used with GHS vacuum, lawn thatch and debris are removed in one pass
- Gauge wheels and hinged frame allow the dethatcher to closely follow terrain
- P/N A10
- Optional Wall Mount Bracket P/N 6606-11



A10 \$ _____ **6606-11 \$** _____

BOOM SPRAYER

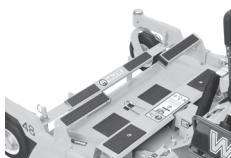
- 25-gallon tank mounts on 42", 48", 52", and 62" decks
- Boom covers a 96" spray pattern
- Spray gun with a 20 ft. hose and adjustable spray tip allow for mist or adjusts to a 35 ft. stream
- Mounting on 52" & 62" decks requires two (2) P/N B037 Rear Sprayer Supports, P/N B028-1 for 60" decks
- P/N A16



A16 \$ _____

ADJUSTABLE FOOTRESTS

- Adjustable footrest clamps on carrier frame of 36", 42", 48", C52 and S74 decks
- Not compatible with deck height adjuster
- P/N 8662-10 - 36", 42", 48", C52
- P/N 8662-9 - S74



8662-10 \$ _____ **8662-9 \$** _____

CURB JUMPER RAMP

- 40" wide curb ramp allows all Walker models to easily drive over standard curbs
- Stows as a footrest on 42" and 48" gear driven decks when not in use
- Molded handle for easy lifting
- P/N 5597
- P/N 5597-1 for use with Deck Height Adjuster



5597 \$ _____

5597-1 \$ _____



Deck Attachments (continued)

DECK CUFF KITS

- Increases effective cutting width of deck by acting as a channel to direct grass under deck that would otherwise follow radius of deck, lay over, and not be cut
- P/N 7704-2 - C36R
- P/N 7704-4 - C48
- P/N 7704-5 - C52R



7704-2 \$ _____

7704-4 \$ _____

7704-5 \$ _____

SPYKER SPREADER ATTACHMENT

- P/N A38 provides the ability to mount the Spyker S80-12010 Pro-Series Spreader on a Walker Mower.
- P/N A39 includes the Spyker S80-12010 Pro-Series Spreader as well as the mount for the Walker mower.



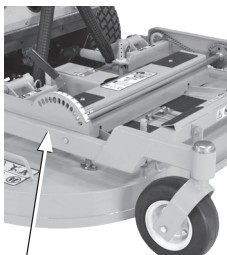
A38 \$ _____

A39 \$ _____

Deck Control and Blade Options

MANUAL DECK HEIGHT ADJUSTER

- Mechanism allows operator to make 1/4" adjustments from the seat
- Replaces four deck height adjustment pins
- Dealer-installed kits for 36", 42", 48", 52", 56" and 62" decks
- P/N A22 - 36" Kit \$ _____
- P/N A23 - S42, C42, M42 Kit \$ _____
- P/N A29 - C42R \$ _____
- P/N A24 - 48", M42B Kit \$ _____
- P/N A25 - C52, C48R Kit \$ _____
- P/N A28 - S56 Kit \$ _____



New style carrier frame required to install this kit

EZ PIN PULLER

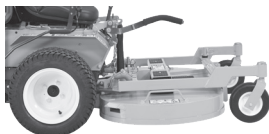
- Easily removes height adjustment hitch pins
- Standard equipment for 52", 62" and 74" decks
- Kit P/N 8770

8770 \$ _____



DECK LIFT

- Raises the deck to a transport position
- Prevents "wear and tear" on deck
- Only works with Standard Seat
- Available for use on all tractors (except Model H) on decks up to 48"
- Useful for transporting on large jobs between mowing areas
- Kit P/N 8645
- Kit P/N 4645 (Models B and S)



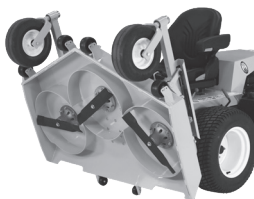
8645 \$ _____

4645 \$ _____

Deck Control and Blade Options (continued)

POWER TILT-UP® DECK

- Provides easy and convenient deck tilt-up for maintenance, storage, and transport of the Model H
- Retrofittable to Model H with DS61, DR52, DR64 equipped with adjustable footrests (starting S/N 160975) with cable saddle kit 8654-14
- A35 for Models H27i and H37i
- A36 for Model H24d
- Use of tail weight suggested, see page 26



A35 \$ _____

A36 \$ _____

DECK HEIGHT WASHERS

- Allows fine adjustment of cutting height
- Finer adjustment than 1/2-inch increments
- P/N 5727-1 - (36", 42", 48", 52", and 56" gear drive decks) 1/4" thick
- P/N 8727 - (52", 62", and 74" belt drive decks), 1/4" thick



5727-1 \$ _____

8727 \$ _____

BREAK AWAY BLADES

- Blades mount on break-away hub
- For use in mowing applications with more exposure to ground contact and debris; minimizes blade damage and impact and shock loading on deck and drive train
- Available on S42, S48, S56 and S74 decks
5705-33 (42" deck) 7705-8 (48" deck)
5705-32 (56" deck) 5705-34 (74" deck)



5705-33 \$ _____

7705-8 \$ _____

5705-32 \$ _____

5705-34 \$ _____

REPLACEABLE DECK WEAR EDGES KIT

- Available on DC48 and DM52 decks.
- Can be flipped over after being worn
- Can be replaced after both top and bottom edges are worn
- Decks with Replaceable Wear Edges feature stronger Edge Stiffeners at housing perimeter - material cross sectional area increased by 66% (increased in both thickness and height)
- Each Kit includes 1 wear strip, 4 nuts and 4 bolts
- DC48 P/N 7703-10, DM52 P/N 7703-21



7703-10 \$ _____ **7703-21 \$** _____

Drive Tires and Wheel Options

18 x 7-8 TURF TIRE

- Used when 36" mower deck is installed on Models S, B, C, D, T
- Standard on Model S14i
- P/N 5033-6

5033-6 \$ _____



Drive Tires and Wheel Options (continued)

18 x 7-8 DIRECTIONAL AT TIRE

- Perfectly paired with the 36 inch Single-Stage Snowblower, the 48 inch Dozer Blade, or 36 and 42 inch decks
- Compatible with all models except H
- P/N 5034-1 - Left Drive Tire
- P/N 5034-2 - Right Drive Tire



5034-1 \$ _____

5034-2 \$ _____

18 x 8.5-10 TURF TIRE

- Used to upgrade Model S with 42" deck installed
- Standard on Models B, C, S18, and Models T and D with ROPS
- P/N 5075-3



5075-3 \$ _____

18 X 8.5-10 AT TIRE

- Increased traction useful for snow removal, dirt work, and other challenging mowing conditions
- Fit Models S, C, T, D, and B
- P/N 8070-9



8070-9 \$ _____

18 x 9.5-8 TURF TIRE

- Superior weight distribution, efficiency, and operator comfort
- Standard on Models T and D without ROPS
- P/N 7070-2



7070-2 \$ _____

18 x 10.5-10 TURF TIRE

- Improves flotation, traction, and hillside stability for Models C, D, T
- Should be used with 48" or larger deck installed
- P/N 8075-4



8075-4 \$ _____

18 x 11-10 AT TIRE

- Aggressive bi-directional, extra wide tread offers best hillside traction
- For use on Models B, S, C, D, T
- For use with 48" or larger deck installed
- Models C, D, T Require 1/2" spacer (P/N 8070-31)
- P/N 8070-6



8070-6 \$ _____

22 x 10.5-12 TURF TIRE

- Compatible with Model H only
- Standard on Model H tractors
- P/N 2071



2071 \$ _____

Drive Tires and Wheel Options (continued)

23 x 10.5-12 AT TIRE

- Aggressive bi-directional, extra wide tread offers best hillside traction
- Compatible with Model H only
- P/N 2071-2



2071-2 \$ _____

23 x 10.5-12 DIRECTIONAL AT TIRE

- Directional design specifically built for the Model H, ideal for snow, dirt, and challenging mowing and implement conditions
- Compatible with Model H only
- P/N 2070-5 Left Drive Tire
- P/N 2070-6 Right Drive Tire



2070-5 \$ _____

2070-6 \$ _____

TIRE CHAINS

- Kits include 1/2" spacer (P/N 8070-31) to provide extra frame clearance with chains installed

<u>Tire Size</u>	<u>Part No.</u>	<u>List Price</u>
18 x 6.5-8	5675	\$ _____
18 x 8.50-8	5675-2	\$ _____
18 x 9.50-8	5675-3	\$ _____
22 x 10.50-12	5675-6	\$ _____



MODEL B - BIG TIRE KIT

- Larger, 20" drive tire option for Model B
- Allows cutting heights up to 5"
- Higher ground speed
- Kit includes taller tail wheel & deck caster forks (for either 8" or 11" tires depending on deck used)
- P/N 5076-10 20" Tire Kit for use with 8" Deck Tires
- P/N 5076-11 20" Tire Kit for use with 11" Deck Tires



5076-10 \$ _____

5076-11 \$ _____

Deck Tires and Tail Wheel Options

PNEUMATIC DECK TIRE

- For use on gear drive decks (36"-56")
- Tire and inner tube only (P/N 5715-15)
- Tire, inner tube, and wheel assembly P/N 5715-17

5715-17 \$ _____



SEMI PNEUMATIC DECK TIRE (GREASEABLE)

- Standard
- A no-flat, fully rubberized tire
- Tire and wheel assembly P/N 5715-22

5715-22 \$ _____



Deck Tires and Tail Wheel Options (continued)

SINGLE WIDE TAIL WHEEL

- Used in applications where the dual tail wheel track is objectionable (finished cut does not look smooth)
- Replaces standard dual tail wheels on Model T
- The single tire slightly increases turning resistance and is not recommended for use on the Model D or any tractor equipped with a Hi-Dump™
- P/N 8049 - Wide Tail Wheel Kit



8049 \$ _____

DUAL TAIL WHEEL

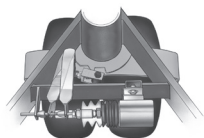
- Standard on Models D, T
- Two independent pneumatic tires
- Less turning resistance than the Single Wide Tail Wheel
- P/N 7420-20



7420-20 \$ _____

TAIL WHEEL LOCK

- Locking solenoid locks tail wheel into "straight ahead" position for striping and hillside work
- Controlled from toggle switch on Forward Speed Control
- Manual override is accomplished by deliberately turning in either direction
- Available for Models D and T only, Kit #8540



8540 \$ _____

SPREAD AXLE TAIL WHEELS

- Tail wheels on spread axle track behind drive tires and offer a smoother ride
- Reduces maneuverability in tight spaces due to tail wheel swinging out
- P/N 7420-3 - Models C, D, T (C requires two 8035)
- P/N 7420-8 - Relocation Kit for Model D



7420-3 \$ _____ **7420-8 \$** _____

Grass Handling System (GHS) Options

HI-DUMP™

- Unique option for handling grass on Model D and T tractors
- Raises catcher up 67 inches
- 20 second cycle time
- Lifting and dumping work independently and are controlled from the seat by toggle switches
- Sturdy construction adds only 150 pounds to tractor
- Assembly bolts on, or may be ordered as a factory-installed option
- Catcher box is mounted only 3 inches higher to maintain tractor stability and low center of gravity
- 200-lb maximum lift rating
- P/N A21 - 10.0 catcher



A21 \$ _____

GHS Options (continued)

POWER DUMP

- Available as factory-installed option for Models C, D, and T tractors
- Available as dealer-installed option for Model S tractors
- Convenient dumping from operator seat
- Kit P/N 7620-14 - Model C
- Kit P/N 8620-2 - Models D and T
- Kit P/N 7620-17 - Model S14i
- Kit P/N 7620-18 - Model S18



7620-14 \$ _____

8620-2 \$ _____

7620-17 \$ _____

7620-18 \$ _____

GHS BLOWER LOCKOUT

- Disengages GHS blower when using side discharge or mulching decks, or implements
- Usable on 10" and 10.5" blowers on Models C, D and T
- P/N 7541-1 (only usable with Micro-V blower belt and pulleys)

7541-1 \$ _____

NO-CATCH DEFLECTOR

- Installed in catcher door to convert GHS models to "no collection" rear discharge mowing
- P/N 8500-2 - 9.5/10.0 Bushel Catcher
- P/N 7500-2 - 7.0 Bushel Catcher



8500-2 \$ _____

7500-2 \$ _____

GHS EXHAUST SCREEN WITH LARGE HOLES

- Use in wet conditions to help prevent the GHS from clogging and to boost vacuum action
- Easily interchanges with standard screen
- P/N 7512-13 - for 7.0 bu catcher
- P/N 7512-11 - for 10.0 bu catcher



7512-13 \$ _____

7512-11 \$ _____

REMOVABLE BINS

- Two molded boxes split the weight of the larger catchers when dumping
- Useful for single operator
- Fits 9.5 and 10.0 bushel catchers
- P/N 8510-11 - Set of Dump Bins
- P/N 8510-9 - Left Side Dump Bin
- P/N 8510-10 - Right Side Dump Bin



8510-11 \$ _____

8510-10 \$ _____

8510-9 \$ _____

DUMP BAG

- Reusable, fabric bag fits over the back door opening
- Can be used with 7.0 and 10.0 bushel catchers
- P/N 5598-1 (7.0), P/N 5598-2 (10.0)

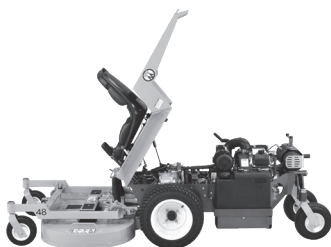


5598-1 \$ _____

5598-2 \$ _____

Standard Features

- Industrial grade engines. All engines are OHV, exhaust emission certified with pressure lubrication and oil filter (except the MS14i which is splash lubricated)
- Eaton Hydrostatic transmission and gear drive axle or Hydro-Gear® transaxles
- Gearboxes use ball or roller bearings and are permanently lubricated
- All-welded steel frame bodies and decks
- Heavy 14 gauge bodies and 11 gauge decks are welded steel construction
- Grass Handling System (GHS) air exhaust screen is removable for easy cleaning
- Industrial grade drive belts can easily be removed and replaced in the field without tools
- Belts tensioned by self-adjusting, spring-loaded idlers
- Simple mechanical belt tightener PTO clutch and band brake (Ogura electric clutch used on Model R and B27i)
- Molded polyethylene fuel tank with fuel level gauge (S14i tank integrated in Kohler engine)
- Quick-disconnect splined PTO drive shaft connection speeds deck installation (bolt on PTO tube used on B18 and S14i)
- Parking brake uses mechanical pin lock in axle or mechanical cog lock on Hydro-Gear® transaxles
- Gas springs with dampening action used on grass catcher door (GHS model) and tilt-open body
- Deck caster wheels pivot on tapered roller bearings
- Mower bodies tilt open and decks tilt up for easy access to moving parts





WALKER
MANUFACTURING CO.

5925 E. HARMONY ROAD
FORT COLLINS, CO 80528
800.279.8537

Effective: 1/20

Walker Manufacturing Company reserves the right to make changes to models, specifications and descriptions without notice.

Copyright © 2020

Printed In USA

P/N 6999-80