



# MIST R SPRAY



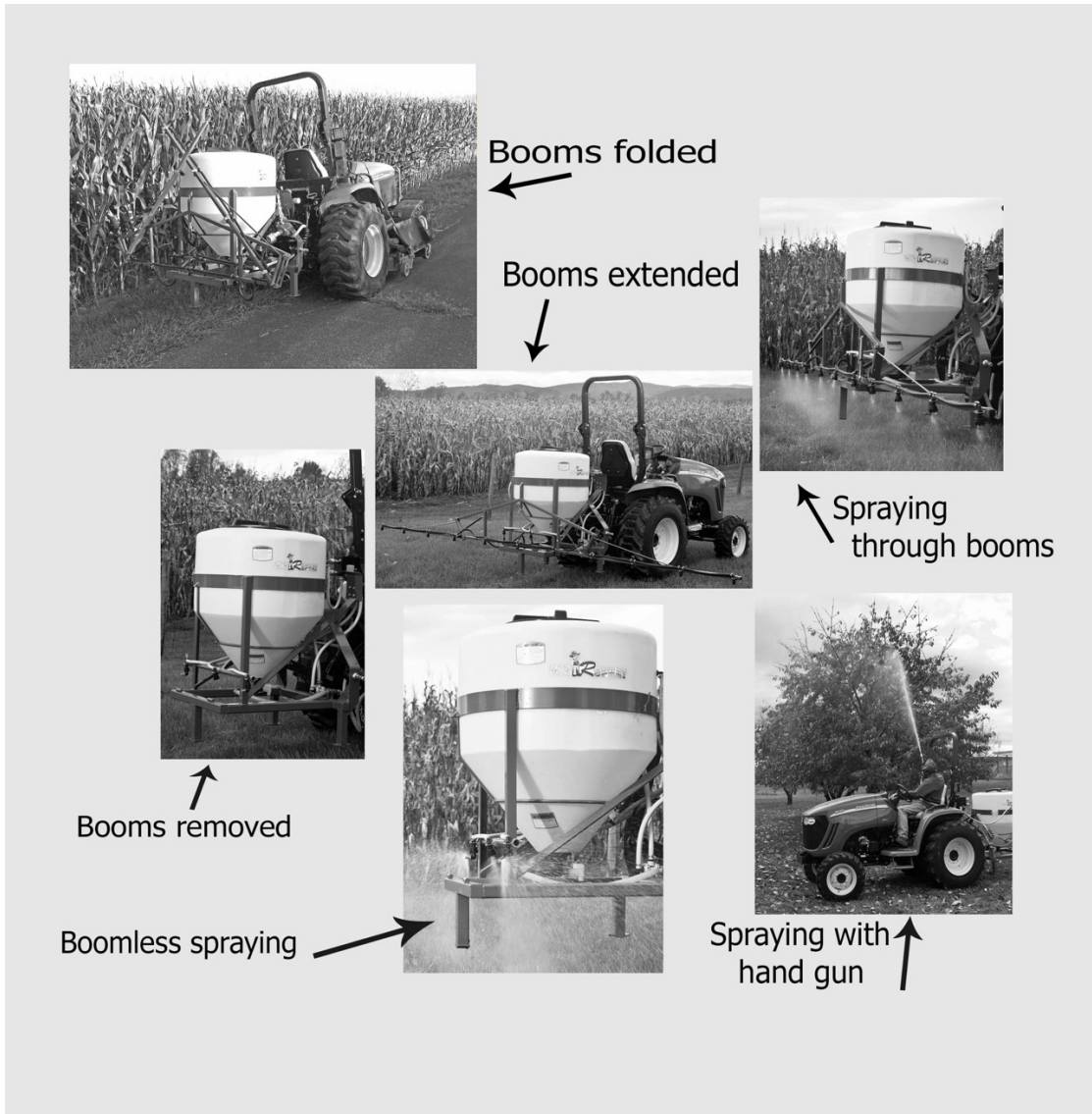
## All-Purpose Spraying System Owner/Operator's Manual



The

# MIST R SPRAY

## Spraying System



Manufactured by Virginia Pressure Washer Repair, trading as

**VPW**  
**ENTERPRISES, LLC**

3262 Limestone Lane, (P) 540 879-2180  
Dayton, Virginia 22821 (F) 540 879-2739

(October, 2019)

# MIST *R*SPRAY Specifications

This spraying system is constructed of heavy-duty structural tubing that is blasted and powder-coated for long-life, with a UV-stable finish to give your new sprayer an attractive appearance that will last for years with minimal care. All components that are in contact with fluids are these:

- 1) UV-stable EPDM rubber hoses
- 2) High-density polyethylene (HDPE) to minimize tank absorption, and
- 3) Sunlight-resistant nylon, brass, or stainless steel fittings.

Model	35-A	80-A	175-A
Tank capacity	35 gallons	80 gallons	175 gallons
Tractor hitch category	Cat-1	Cat-1 or Cat-2	Cat-2
Standard pump	6500-C Hypro	6500-C Hypro	7700-C Hypro
Hand gun	Included	Included	Included
Spray reach with hand gun	18 feet	18 feet	18 feet
Standard hand gun hose length	10 feet	10 feet	10 feet
Tank agitation system	Included	Included	Included
Adjustable pressure control	Included	Included	Included
Telescopic controls	Included	Included	Included
			(Manual only)
Weight without attachments (lbs)	129	187	269
Full tank weight (water) (lbs)	409	827	1400
Physical dimensions without attachments (W/D/H)	37"/28"/46"	40"/37"/51"	48"/51"/61"

12-foot boom weight (lbs)	37
Physical dimensions (W/D/H)	58"/4"/47"
18-foot boom weight (lbs)	44
Physical dimensions (W/D/H)	82"/4"/64"

Compatible attachments:

Unit	Manual or Electric Kit	Boom 12 ft.	Boom 18 ft.	Boomless kit	Extension 18 in.	Extension 36 in.	Pressure Washer
35-A	•	•	•	•	•	•	
80-A	•	•	•	•	•	•	•
175-A	•	•	•	•	•	•	•

# TABLE OF CONTENTS

Introduction . . . . .	2
Warranty and Disclaimer . . . . .	2
Shipping and Receiving . . . . .	3
Upon Receiving Your Spraying System . . . . .	3
A Word about Safety . . . . .	3
Operation . . . . .	4
Familiarize Yourself with the Sprayer Controls . . . . .	4
Agitation valve . . . . .	4
Primary output control . . . . .	4
Pressure control . . . . .	4
Section selector . . . . .	4
Spray gun control . . . . .	5
Control panel adjustment . . . . .	5
Combined primary output and pressure control . . . . .	5
Connect Your Sprayer to Your Tractor . . . . .	5
Assemble Your Spraying System . . . . .	6
Product Application Rate . . . . .	8
Prepare Your Product . . . . .	8
Annual Maintenance . . . . .	9
Sprayer Features . . . . .	10
Appendix 1 . . . . .	12
Appendix 2 . . . . .	13
Appendix 3 . . . . .	17

## I. Introduction

*Thank-you* for purchasing this **MISTRSPRAY** All-Purpose Spraying System. You should anticipate years of service from this machine if you operate it with care and provide it with the minimal maintenance required.

The **MISTRSPRAY** Spraying System was designed to

- Facilitate easy and safe mixing of both liquid and solid components (e.g., wettable powder fertilizers, herbicides, and fungicides) with water,
- Enable you to apply the resulting solutions/suspensions with great flexibility, using several popular styles of 'quick-attach' booms or a hand gun, all tailored to your specific crop requirements,
- Allow complete emptying of the tank so that you can avoid coming into direct contact with fluids within, and
- Permit simple connections with compatible 'quick hitches' and to enable comfortable adjustment of controls.

*Please read this manual carefully before attempting to use your Spraying System.*

### A. Warranty and Disclaimer

**VPW Enterprises** offers a 90-day 'total satisfaction' guarantee. The manufacturer guarantees equipment to be free of defects of workmanship for one-year. **Note, however, that the pump warranty is offered at the discretion of the pump manufacturer.** *All returns for any warranty claims or needed repair must be returned at customer's expense to the manufacturer or authorized dealer to determine if the equipment component in question is covered by this warranty.* Please note:

- Start of warranty is the date of purchase of the Spraying System
- Warranty will be invalidated if **VPW Enterprises** determines that the Spraying System, or any components of the Spraying System, were
  - Damaged by misuse or abuse
  - Damaged by causes beyond your or our control
  - Operated other than in accordance with operation instructions provided in this manual
  - Operated other than in accordance with equipment updates originating from **VPW Enterprises**
  - Altered or repaired by you or your agent not authorized by **VPW Enterprises.**

**DISCLAIMER:** *VPW Enterprises shall not be held responsible for any injury or damage to property if this Spraying System is operated in an unsafe manner, or if it is used for any purpose other than which it is intended. Please follow all safety guidelines found in this manual.*

B. Shipping and Receiving

If you choose not to pick up your **MISTRS**PRAY Spraying System from the manufacturer or an authorized dealer, then the unit will be shipped F.O.B. from the manufacturing site or the dealer's location. **VPW Enterprises** cannot be responsible for damage incurred during transfer to its intended location—whether picked up by you, the purchaser, or your agent, such as a professional transport company.

II. Upon Receiving Your Spraying System

Please note that your spraying system was 'winterized' before leaving the manufacturing facility. If you anticipate holding the sprayer only after seasonal freezing temperatures have passed, the winterizing fluid will prevent damage to hoses, fittings, and the pump. But, if you intend to use your sprayer right away, you may fill the storage tank with your desired water-based solution/suspension without draining the 'winterizing' fluid, as it will be rendered harmless—to crops, animals, and humans—by significant dilution with the product you prepare for spraying.

III. A Word About Safety

We at **VPW Enterprises** are concerned that you, the owner of a **MISTRS**PRAY Spraying System, operate this equipment safely and responsibly. Please pay close attention to the cautions and warnings that appear in this manual pertaining to possible chemical hazards.

**WARNING!**

You are responsible for the proper installation and operation of this spraying system. Improper connection to your tractor and/or system operation may cause injury to personnel and/or failure of the unit. If you choose to make changes to the sprayer assembly and product preparation instructions given in this manual, be sure you perform these tasks, outfitted with the appropriate health and safety apparel, in accordance with all local, state, and national safety codes.

## IV. Operation

### A. Familiarize yourself with the sprayer controls

#### ❖ Agitation Valve {Models 35-A, 80-A, and *manual* 175-A}



Valve closed



Valve open

For mixing wet and dry components of your product during tank filling and, if needed, during spraying. (Operate this control with booms and spray gun **off** to prevent accidental loss of product during agitation.)

#### ❖ Primary Output Control {Models 35-A and 80-A}



Manual valve control



Electric switch option

This is the master **on/off** control for application devices attached to the rear of the sprayer. (NOTES: The *manual* valve control [labeled Auxiliary Boom] is shown in the **off** position. The electric switch box is magnetized for easy attachment to the tractor. Two [paired] cables leading from the box will be connected to the appropriate electrodes of the tractor battery.)

#### ❖ Pressure Control {Models 35-A, 80-A, and *manual* 175-A}



For setting the output pressure to achieve target spraying rates. (Turn *clockwise* for higher pressure, and *counter-clockwise* for lower pressure.)

#### ❖ Section Selector {Models 35-A, 80-A, and *manual* 175-A}



These valves are used to turn **off** a section of the boom not needed to minimize waste and over-spraying. (When a valve is set perpendicular to its spray line [as is the center valve], the flow through that line is turned **off**. When set parallel to its line [as are the first and third valves], the flow through that line is turned **on**.)



❖ **Spray Gun Control Operation**

Used to turn **on** or **off** the operation of the spray gun. Pull the trigger only a small distance to achieve a fine mist; pull it further back for a straight stream.



'Holstered' spray gun

❖ **Control Panel Adjustment {Models 35-A, 80-A, and manual 175-A}**

You may position the control panel for your comfort. Release the cam lever and slide the control panel to your desired position. Then tighten the cam lever firmly with the palm of your hand.



(Control panel shown extended)

❖ **Combined Primary Output and Pressure Control {Model 175-A electric only}**

This control console permits the user electrically . . .

- ❖ . . . to adjust spraying pressure (easily read by means of the pressure gauge), and
- ❖ . . . to open or close boom valves by means of toggle switches (labeled L, C, R)



B. Connect your sprayer to a tractor

First, park your tractor within reach of the three-point arm connections on the sprayer. Then,

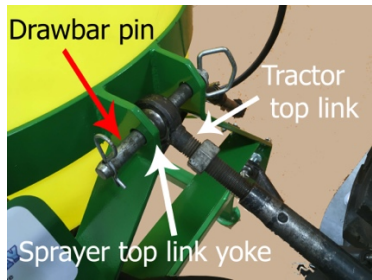
Connect the two bottom lift arms to the lift arm pins on the sprayer frame, and then insert linchpins to secure the connections.



Linchpin above lift arm pin

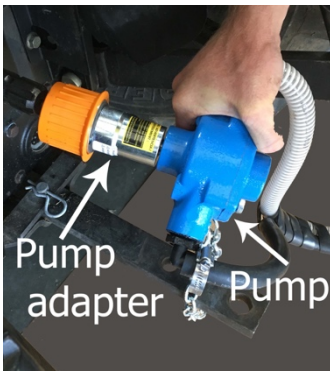


Linchpin inserted



Sprayer-tractor linking

Connect the tractor top link to the top link yoke on the sprayer using a drawbar pin not less than 3/4" (*pin not included with sprayer*). Then, adjust the center section of the linkage to allow the sprayer to rest level on the ground. Lock the adjustment, and set the sway control of the two bottom lift arms as needed.



Connect the sprayer pump to the power take-off (PTO) shaft of the tractor: 1) Lift the pump (with its adapter attached) and line it up with the PTO shaft. 2) Pull the adapter collar (orange plastic piece in the photograph) back toward the pump, then push the pump toward the tractor until the adapter locks onto the shaft as you release the collar. (A clicking sound should be heard.) 3) Test the connection by pulling on the pump before activating the PTO. Be sure to secure the 'stay' chain to the tractor drawbar to prevent the pump from spinning during sprayer operation.

C. Assemble your spraying system

***(NOTE: Most, if not all, of the assembly of your sprayer likely will have been completed when you receive it from the manufacturer or authorized dealer [as requested in your order]. Also, if you intend to spray with the handgun only, skip this section and begin with section D. below.)***



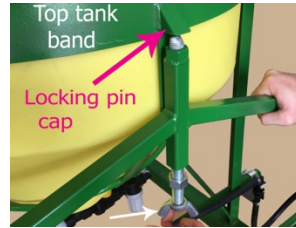
Boom ready to mount



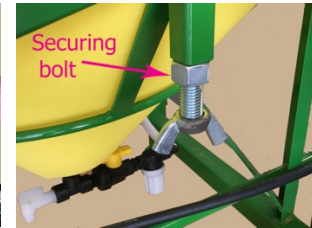
Boom set in place

Attach your boom to the rear of the sprayer by, first, setting the two "V-sockets" into the bottom mounts of the main unit frame.

Then, tighten firmly the locking pin into its cap (welded to the top tank band). Tighten the bolt (as shown in the second photograph) to secure the locking pin into the cap.



Tightening locking pin into cap

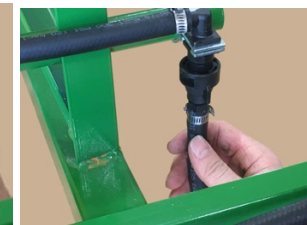


Bolt tightened to secure locking pin into cap

Connect sprayer hoses to the spray ports (left, center, right) on the boom. Align hose connector with two pins on the spray port, push up, and turn the connector clockwise to lock in place.

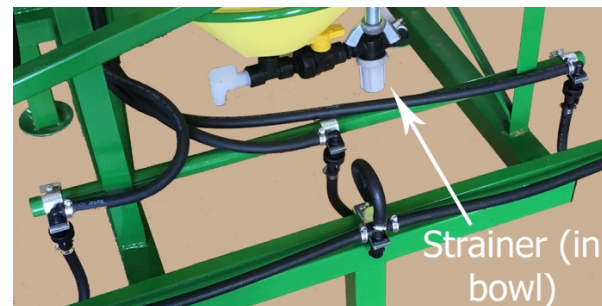


Hose ready to connect



Hose connected

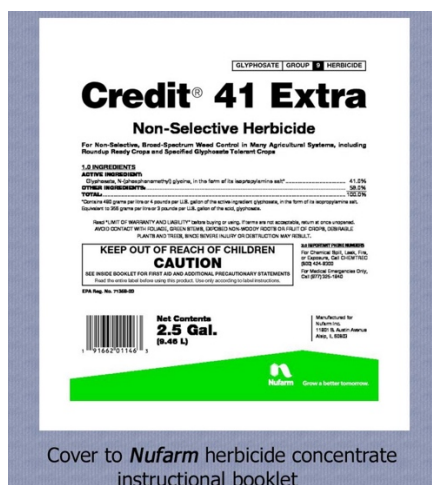
*We recommend that you remove the strainer (identified in the photograph) and clean it well after each spraying.*



Left, center, and right hoses connected

D. Familiarize yourself with your product concentrate

***We strongly recommend you read and understand all concerns about chemical safety, and any listed rates of application—both provided by the manufacturer of your chosen concentrate which, when diluted with water, becomes your final product mix.***



Cover to Nufarm herbicide concentrate instructional booklet

**SAFETY:** The booklet informs the user of the chemical composition (41% glyphosate) of this concentrate; safety recommendations (e.g., use of personal protective equipment [PPE]); first aid steps to be taken if chemical contacts the body or clothing; environmental, physical & chemical hazards that pertain to this herbicide. *Please be sure to follow all safety guidelines in product concentrate literature, and any safety information (as Safety Data Sheets) provided to you by the manufacturer or your vendor.*

**APPLICATION RATE:** Numerous rates are given in the booklet, based on factors such as 1) specific weed species to be killed, 2) crops to be treated, 3) time of year of intended application, 4) time of maturation/harvest of crop, and 5) restrictions/limitations of applications imposed by state lawmakers (in the USA) at time of label/booklet printing.

E. Product application rate

Once you have in mind the acreage to be sprayed, and the recommended/ permitted gallons per acre to be applied, use the *TeeJet*® ‘Tip Specification Chart’ (Appendix 1) to determine the spray tip size that will be suitable for your spraying plan. Be sure to take into account your

- travel speed,
- the spray tip you choose\*, and the
- expected operating pressure

as you set the actual application rate of your product with your sprayer as purchased. (*We suggest, before you do your initial product application, you do a trial spraying with just water to test your calculations.*)

\*Unless you requested otherwise, your new sprayer was shipped with *TeeJet*® XR11004-VP tips with 50 mesh tip strainers. [See Appendix 1.]

NOTE: If you wish to prevent dripping of any product remaining in the tank or lines when the spray pressure is *off*, you may custom order 4193APP550SS tip strainers with ‘check valves’. [See Appendix 2.]

F. Prepare your product

First, consider the volume of quantity of liquid product you will need to cover the target spraying area. Then, calculate the quantity of chemical concentrate(s) you will need to include in the final mix.

To prepare the mix:

With the sprayer connected to the (parked) tractor,

- Make sure the sprayer is resting on level ground in a safe place.
- After you close the tank drain valve, add to the tank about three gallons of water.
- Engage the PTO at 2/3 rpm, and start the agitation.
- Add more water along with the product(s) you wish to include in the spray mix.
- Finish the preparation by triple-rinsing product container(s) into the tank and filling the tank to the desired level with water. (Allow the agitation to run for an additional three minutes for liquid product ingredients, or, if needed, longer if they are dry to completely dissolve [or suspend] them.) **[Please note: With dry ingredients, take care to add them a little at a time to prevent their clumping, being drawn into the tank strainer, and, by clogging the strainer, hindering adequate agitation of your product mix.]**

## V. Annual Maintenance

### A. Winterizing your sprayer

**\*\*NOTE: If you intend to use your sprayer during times that temperatures drop below the freezing point, be sure to 'winterize' your sprayer if you anticipate continued low temperatures to prevent possible damage from liquid freezing in the lines, nozzles, tank, and pump.\*\***

- Clean the sprayer tank and all spray lines and fittings with water, and run the pump until the tank and lines are empty.
- Obtain a gallon of alcohol-based RV (recreational vehicle) antifreeze, and pour it into the empty sprayer tank.
- Run the pump just long enough until you see the antifreeze come out of all spray nozzles, including that of the spray gun.

### B. Boom hinge joint lubrication

- Apply grease to these joints with a grease gun attached to the grease fittings shown in the photograph below



## VI. Sprayer Features

### A. STANDARD

#### Spraying hardware

##### 'Break-away' booms

Booms fold back at hinge if the end hits a fence or another object or structure.



Boom springs/gas shocks hold ends of booms either folded or extended, as desired.

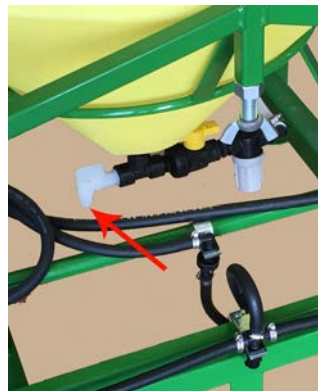
Booms folded for convenient sprayer transport or storage



#### Tank draining & pump storage

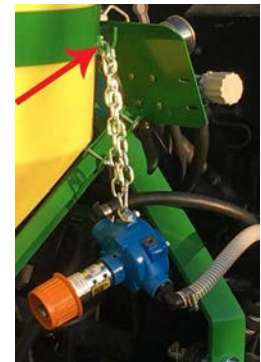
##### 'Total drain' system

Leftover spray product? Tank-cleaning solution to remove and discard safely? Just place a bucket or other container below spigot, and drain the tank completely.



##### Pump storage hook

Loop 'stay-chain' over hook welded to top band of frame to secure pump during sprayer storage.



## B. CUSTOM

### Booms

Have the need to spray your berry patch? We'll talk to you about your task, and let you know if we can create the style of booms you'll need.



Blueberry row sprayer

### Pumps



This Annovi Reverberi liquid fertilizer and pesticide low pressure diaphragm pump may be just what you need for spraying tall trees, or for disinfecting your poultry house.

### Wheel Kits

One of our most popular 'custom' offerings is a wheel-based sprayer that can be easily linked to a garden tractor/lawn mower, or to an all-terrain vehicle (ATV). Here, the sprayer is operated electrically (via the 12-volt battery of the vehicle) from the 'driver's seat'. Perfect for the homeowner or the groundskeeper of a nursery or housing complex who has no need (or space) for a large, costly, tractor.



## 'ADD-ONS'

### 'Load-On' water system

Sprayer tank empty, but far from home? Use this kit to fill your tank with water from a pond or a river!



### Pressure washer

With this kit, you can easily and efficiently clean dirt and other debris from the surfaces of agricultural equipment, farm structures, animal enclosures—whatever would benefit by high-pressure cold water spraying.

# Appendix 1 TeeJet® Extended Range Flat Spray Tips (from page 12 of Catalog 51A)

	PSI	DROP SIZE		CAPACITY ONE NOZZLE IN GPM	CAPACITY ONE NOZZLE IN OZ./MIN.	20'															
		80°	110°			GPA								GALLONS PER 1000 SQ. FT.							
						4 MPH	5 MPH	6 MPH	8 MPH	10 MPH	12 MPH	15 MPH	20 MPH	2 MPH	3 MPH	4 MPH	5 MPH				
XR8001 XR11001 (100)	15	F	F	0.061	7.8	4.5	3.6	3.0	2.3	1.8	1.5	1.2	0.91	0.21	0.14	0.10	0.08				
	20	F	F	0.071	9.1	5.3	4.2	3.5	2.6	2.1	1.8	1.4	1.1	0.24	0.16	0.12	0.10				
	30	F	F	0.087	11	6.5	5.2	4.3	3.2	2.6	2.2	1.7	1.3	0.30	0.20	0.15	0.12				
	40	F	F	0.10	13	7.4	5.9	5.0	3.7	3.0	2.5	2.0	1.5	0.34	0.23	0.17	0.14				
	50	F	F	0.11	14	8.2	6.5	5.4	4.1	3.3	2.7	2.2	1.6	0.37	0.25	0.19	0.15				
60	F	VF	0.12	15	8.9	7.1	5.9	4.5	3.6	3.0	2.4	1.8	0.41	0.27	0.20	0.16					
XR80015 XR110015 (100)	15	M	F	0.092	12	6.8	5.5	4.6	3.4	2.7	2.3	1.8	1.4	0.31	0.21	0.16	0.13				
	20	M	F	0.11	14	8.2	6.5	5.4	4.1	3.3	2.7	2.2	1.6	0.37	0.25	0.19	0.15				
	30	F	F	0.13	17	9.7	7.7	6.4	4.8	3.9	3.2	2.6	1.9	0.44	0.29	0.22	0.18				
	40	F	F	0.15	19	11.1	8.9	7.4	5.6	4.5	3.7	3.0	2.2	0.51	0.34	0.26	0.20				
	50	F	F	0.17	22	12.6	10.1	8.4	6.3	5.0	4.2	3.4	2.5	0.58	0.39	0.29	0.23				
60	F	F	0.18	23	13.4	10.7	8.9	6.7	5.3	4.5	3.6	2.7	0.61	0.41	0.31	0.24					
XR8002 XR11002 (50)	15	M	M	0.12	15	8.9	7.1	5.9	4.5	3.6	3.0	2.4	1.8	0.41	0.27	0.20	0.16				
	20	M	F	0.14	18	10.4	8.3	6.9	5.2	4.2	3.5	2.8	2.1	0.48	0.32	0.24	0.19				
	30	F	F	0.17	22	12.6	10.1	8.4	6.3	5.0	4.2	3.4	2.5	0.58	0.39	0.29	0.23				
	40	F	F	0.20	26	14.9	11.9	9.9	7.4	5.9	5.0	4.0	3.0	0.68	0.45	0.34	0.27				
	50	F	F	0.22	28	16.3	13.1	10.9	8.2	6.5	5.4	4.4	3.3	0.75	0.50	0.37	0.30				
60	F	F	0.24	31	17.8	14.3	11.9	8.9	7.1	5.9	4.8	3.6	0.82	0.54	0.41	0.33					
XR80025 XR110025 (50)	15	M	M	0.15	19	11.1	8.9	7.4	5.6	4.5	3.7	3.0	2.2	0.51	0.34	0.26	0.20				
	20	M	M	0.18	23	13.4	10.7	8.9	6.7	5.3	4.5	3.6	2.7	0.61	0.41	0.31	0.24				
	30	F	F	0.22	28	16.3	13.1	10.9	8.2	6.5	5.4	4.4	3.3	0.75	0.50	0.37	0.30				
	40	F	F	0.25	32	18.6	14.9	12.4	9.3	7.4	6.2	5.0	3.7	0.85	0.57	0.43	0.34				
	50	F	F	0.28	36	21	16.6	13.9	10.4	8.3	6.9	5.5	4.2	0.95	0.63	0.48	0.38				
60	F	F	0.31	40	23	18.4	15.3	11.5	9.2	7.7	6.1	4.6	1.1	0.70	0.53	0.42					
XR8003 XR11003 (50)	15	M	M	0.18	23	13.4	10.7	8.9	6.7	5.3	4.5	3.6	2.7	0.61	0.41	0.31	0.24				
	20	M	M	0.21	27	15.6	12.5	10.4	7.8	6.2	5.2	4.2	3.1	0.71	0.48	0.36	0.29				
	30	F	F	0.26	33	19.3	15.4	12.9	9.7	7.7	6.4	5.1	3.9	0.88	0.59	0.44	0.35				
	40	F	F	0.30	38	22	17.8	14.9	11.1	8.9	7.4	5.9	4.5	1.0	0.68	0.51	0.41				
	50	F	F	0.34	44	25	20	16.8	12.6	10.1	8.4	6.7	5.0	1.2	0.77	0.58	0.46				
60	F	F	0.37	47	27	22	18.3	13.7	11.0	9.2	7.3	5.5	1.3	0.84	0.63	0.50					
XR80035 (50)	15	M		0.21	27	15.6	12.5	10.4	7.8	6.2	5.2	4.2	3.1	0.71	0.48	0.36	0.29				
	20	M		0.25	32	18.6	14.9	12.4	9.3	7.4	6.2	5.0	3.7	0.85	0.57	0.43	0.34				
	30	M		0.30	38	22	17.8	14.9	11.1	8.9	7.4	5.9	4.5	1.0	0.68	0.51	0.41				
	40	M		0.35	45	26	21	17.3	13.0	10.4	8.7	6.9	5.2	1.2	0.79	0.60	0.48				
	50	F		0.39	50	29	23	19.3	14.5	11.6	9.7	7.7	5.8	1.3	0.88	0.66	0.53				
60	F		0.43	55	32	26	21	16.0	12.8	10.6	8.5	6.4	1.5	0.97	0.73	0.58					
XR8004 XR11004 (50)	15	C	M	0.24	31	17.8	14.3	11.9	8.9	7.1	5.9	4.8	3.6	0.82	0.54	0.41	0.33				
	20	M	M	0.28	36	21	16.6	13.9	10.4	8.3	6.9	5.5	4.2	1.0	0.63	0.48	0.38				
	30	M	M	0.35	45	26	21	17.3	13.0	10.4	8.7	6.9	5.2	1.2	0.79	0.60	0.48				
	40	M	M	0.40	51	30	24	19.8	14.9	11.9	9.9	7.9	5.9	1.4	0.91	0.68	0.54				
	50	F	F	0.45	58	33	27	22	16.7	13.4	11.1	8.9	6.7	1.5	1.0	0.77	0.61				
60	F	F	0.49	63	36	29	24	18.2	14.6	12.1	9.7	7.3	1.7	1.1	0.83	0.67					
XR8005 XR11005 (50)	15	C	M	0.31	40	23	18.4	15.3	11.5	9.2	7.7	6.1	4.6	1.1	0.70	0.53	0.42				
	20	C	M	0.35	45	26	21	17.3	13.0	10.4	8.7	6.9	5.2	1.2	0.79	0.60	0.48				
	30	M	M	0.43	55	32	26	21	16.0	12.8	10.6	8.5	6.4	1.5	0.97	0.73	0.58				
	40	M	M	0.50	64	37	30	25	18.6	14.9	12.4	9.9	7.4	1.7	1.1	0.85	0.68				
	50	M	F	0.56	72	42	33	28	21	16.6	13.9	11.1	8.3	1.9	1.3	0.95	0.76				
60	F	F	0.61	78	45	36	30	23	18.1	15.1	12.1	9.1	2.1	1.4	1.0	0.83					
XR8006 XR11006 (50)	15	C	C	0.37	47	27	22	18.3	13.7	11.0	9.2	7.3	5.5	1.3	0.84	0.63	0.50				
	20	C	M	0.42	54	31	25	21	15.6	12.5	10.4	8.3	6.2	1.4	1.0	0.71	0.57				
	30	M	M	0.52	67	39	31	26	19.3	15.4	12.9	10.3	7.7	1.8	1.2	0.88	0.71				
	40	M	M	0.60	77	45	36	30	22	17.8	14.9	11.9	8.9	2.0	1.4	1.0	0.82				
	50	M	M	0.67	86	50	40	33	25	19.9	16.6	13.3	9.9	2.3	1.5	1.1	0.91				
60	M	F	0.73	93	54	43	36	27	22	18.1	14.5	10.8	2.5	1.7	1.2	0.99					
XR8008 XR11008 (50)	15	VC	C	0.49	63	36	29	24	18.2	14.6	12.1	9.7	7.3	1.7	1.1	0.83	0.67				
	20	VC	C	0.57	73	42	34	28	21	16.9	14.1	11.3	8.5	1.9	1.3	0.97	0.78				
	30	C	C	0.69	88	51	41	34	26	20	17.1	13.7	10.2	2.3	1.6	1.2	0.94				
	40	M	M	0.80	102	59	48	40	30	24	19.8	15.8	11.9	2.7	1.8	1.4	1.1				
	50	M	M	0.89	114	66	53	44	33	26	22	17.6	13.2	3.0	2.0	1.5	1.2				
60	M	M	0.98	125	73	58	49	36	29	24	19.4	14.6	3.3	2.2	1.7	1.3					
XR8010† XR11010†	15	XC	VC	0.61	78	45	36	30	23	18.1	15.1	12.1	9.1	2.1	1.4	1.0	0.83				
	20	VC	C	0.71	91	53	42	35	26	21	17.6	14.1	10.5	2.4	1.6	1.2	0.97				
	30	C	C	0.87	111	65	52	43	32	26	22	17.2	12.9	3.0	2.0	1.5	1.2				
	40	C	M	1.00	128	74	59	50	37	30	25	19.8	14.9	3.4	2.3	1.7	1.4				
	50	C	M	1.12	143	83	67	55	42	33	28	22	16.6	3.8	2.5	1.9	1.5				
60	C	M	1.22	156	91	72	60	45	36	30	24	18.1	4.1	2.8	2.1	1.7					
XR8015† XR11015†	15	XC	VC	0.92	118	68	55	46	34	27	23	18.2	13.7	3.1	2.1	1.6	1.3				
	20	XC	VC	1.06	136	79	63	52	39	31	26	21	15.7	3.6	2.4	1.8	1.4				
	30	VC	VC	1.30	166	97	77	64	48	39	32	26	19.3	4.4	2.9	2.2	1.8				
	40	VC	C	1.50	192	111	89	74	56	45	37	30	22	5.1	3.4	2.6	2.0				
	50	C	C	1.68	215	125	100	83	62	50	42	33	25	5.7	3.8	2.9	2.3				
60	C	C	1.84	236	137	109	91	68	55	46	36	27	6.3	4.2	3.1	2.5					

Note: Always double check your application rates. Tabulations are based on spraying water at 70°F (21°C).



## Appendix 2 Replacement Parts

	<u>Part Number</u>	<u>Description</u>
	18637113406NYB	NOZZLE BODY TRIPLE HOSE
	18636112406NYB	NOZZLE BODY DOUBLE HOSE
	18635111406NYB	NOZZLE BODY SINGLE HOSE
	QJ111SQ1	1" SQ BOOM NOZZLE HOLDER
	QJ11134	3/4" REAR ACCESSORY ACCESS POINT
	1144411CELR	BLACK AIR FAN TIP CAP
	CP19438EPR	CAP GASKET
	QJ46769014NYR	QUICKJET ADAPTER 90 DEG. 1/4" FTP
	XR11004VP	TEEJAY SPRAY TIP – XR POLYMER, RED

## Appendix 2 Replacement Parts (cont.)

	<u>Part Number</u>	<u>Description</u>
	1/4X010L-VP	BOOMLESS FLAT SPRAY NOZZLE, LEFT SIDE
	1/4X010R-VP	BOOMLESS FLAT SPRAY NOZZLE, RIGHT SIDE
	4193APP550SS	TIP STRAINER, 50 MESH, WITH CHECK VALVE
	8079PP50	TIP STRAINER. 50 MESH
	AA6B	6B CONTROL VALVE
	2312034PP	PRESSURE REGULATING VALVE
	GG300	GAUGE 300 PSI
	LOCKPIN-3/4	BOOM LOCKING PIN
	3EL3434	PUMP INLET FITTING

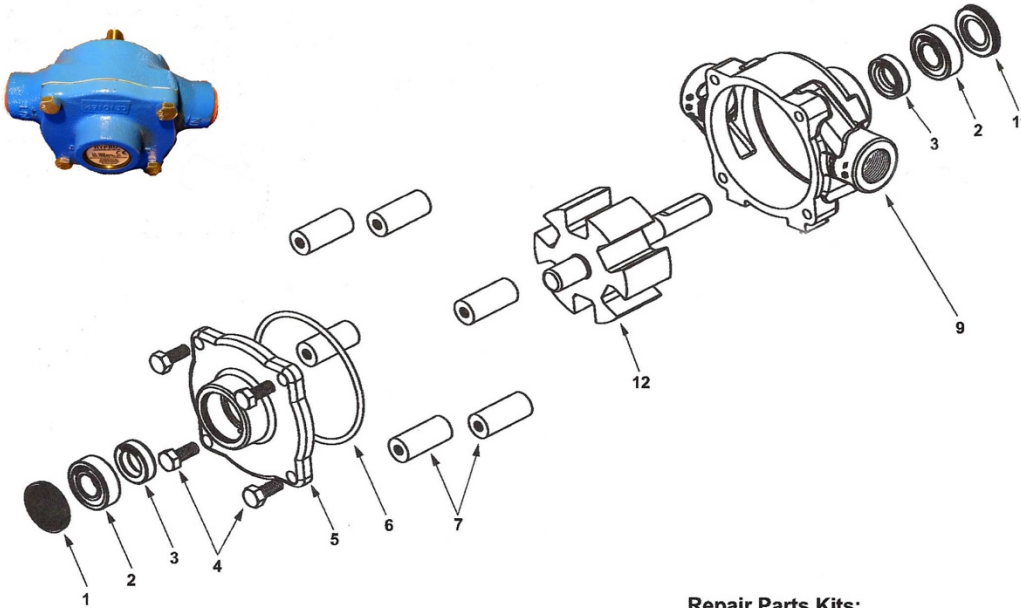
## Appendix 2 Replacement Parts (cont.)

<u>Part Number</u>	<u>Description</u>
	3EL3412 PUMP OUTLET FITTING
	3A3434 PUMP INLET / FRAME SIDE
	3A3412 PUMP OUTLET / FRAME SIDE
	SG170022 22" TRIGGER SPRAY GUN (for all Sprayer Models)
	4138T56 GAS SHOCK / BOOM SPRING
	CP45102-3-SSPP 50 MESH STRAINER (for Sprayer Models 35-A and 80-A)
	CP23173EPR GASKET FOR STRAINER (for Sprayer Models 35-A and 80-A)
	CP23172PP STRAINER BOWL, GRAY (for Sprayer Models 35-A and 80-A)
	6500C CAST IRON ROLLER PUMP (for Sprayer Models 35-A and 80-A)

## Appendix 2 Replacement Parts (cont.)

<u>Part Number</u>	<u>Description</u>
	CP16903-4-SSPP 50 MESH STRAINER (for Sprayer Model 175-A)
	CP50494EPR GASKET FOR STRAINER (for Sprayer Model 175-A)
	CP50493PP STRAINER BOWL, GRAY (for Sprayer Model 175-A)
	7700C CAST IRON ROLLER PUMP (for Sprayer Model 175-A)
	PTO SHAFT ADAPTER
	1323-0074 ..... for pump 6500C
	1323-0072 ..... for pump 7700C
	744 SPRAYER CONTROL CONSOLE (for Sprayer Model 175-A)

## Appendix 3a Roller pump (Hypro 6500-C) parts detail (for Sprayer Models 35-A and 80-A)



### Repair Parts Kits:

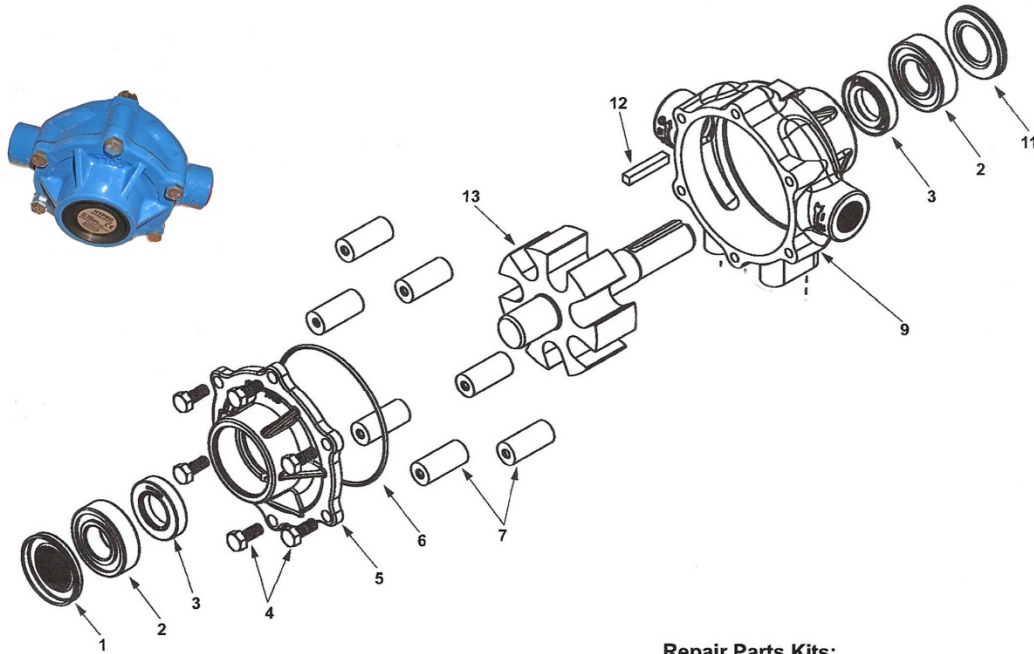
**No. 3430-0380** Consists of (6) Ref. 7 Super Rollers, (1) Ref. 6 O-ring, and (2) Ref. 3 Viton seals.

**No. 3430-0175** Consists of (6) Ref. 7 Polypropylene Rollers, (1) Ref. 6 O-ring, and (2) Ref. 3 Viton seals.

Ref. No.	Qty. Req'd.	Part Number	Description
1	1	2300-0021	Bearing Cover
2	2	2000-0010	Sealed Ball Bearing
3	2	2107-0002	Viton Seal (Standard)
3	2	2102-0001	Buna-N Seal (Optional)
3	2	2102-0001T	Teflon-coated Buna-N Seal (Optional)
4	4	2210-0004	Bolts
5	1	0200-6600C	Endplate (Cast Iron) with Seal
5	1	0200-6600N	Endplate (Ni-Resist) with Seal
5	1	0200-6600X	Endplate (SilverCast) with Seal
6	1	1720-0008	O-ring Gasket for Endplate
7	6	1005-0004	Super Roller (Standard)
7	6	1002-0004	Polypropylene Roller (Optional)
7	6	1055-0004	Teflon Roller (Optional)

Ref. No.	Qty. Req'd.	Part Number	Description
9	1	0100-6600C	Body (Cast Iron) with Seal
9	1	0100-6600N	Body (Ni-Resist) with Seal
9	1	0100-6600X	Body (SilverCast) with Seal
11	1	2300-0023	Shaft Bearing Cover
12	1	0300-6600C	Rotor Assembly (Cast Iron)
12	1	3430-0767	Rotor Assembly (Std. Ni-Resist & XL)

## Appendix 3b Roller pump (Hypro 7700-C) parts detail (for Sprayer Model 175-A)



### Repair Parts Kits:

**No. 3430-0384** Consists of (8) Ref. 7 Super Rollers, (1) Ref. 6 O-ring, and (2) Ref. 3 Viton seals

**No. 3430-0167** Consists of (8) Ref. 7 Polypropylene Rollers, (1) Ref. 6 O-ring, and (2) Ref. 3 Viton seals

Ref. No.	Qty. Req'd.	Part Number	Description
1	1	2300-0020	Bearing Cover
2	2	2008-0001	Sealed Ball Bearing
3	2	2112-0003	Viton Seal (Standard)
3	2	2112-0001	Buna-N Seal (Optional)
4	6	2210-0004	Bolts
5	1	0200-7700C	Endplate (Cast Iron) with Seal
5	1	0200-7700N	Endplate (Ni-Resist) with Seal
5	1	0200-7700X	Endplate (SilverCast) with Seal
6	1	1720-0014	O-ring Gasket for Endplate
7	8	1005-0004	Super Roller (Standard)
7	8	1002-0004	Polypropylene Roller (Optional)
7	8	1055-0004	Teflon Roller (Optional)

Ref. No.	Qty. Req'd.	Part Number	Description
9	1	0100-7700C	Body (Cast Iron) with Seal
9	1	0100-7700N	Body (Ni-Resist) with Seal
9	1	0100-7700X	Body (SilverCast) with Seal
11	1	2300-0022	Shaft Bearing Cover
12	1	1610-0005	Key
13	1	0300-7700C	Rotor Assembly (Cast Iron)
13	1	0300-7700N	Rotor Assembly (Ni-Resist)
13	1	0300-7700X	Rotor Assembly (SilverCast)
13	1	0301-7700C	Rotor Assembly (Cast Iron) <b>Rev. Rot.</b>
13	1	0301-7700N	Rotor Assembly (Ni-Resist) <b>Rev. Rot.</b>
13	1	0301-7700X	Rotor Assembly (SilverCast) <b>Rev. Rot.</b>



**VPW**  
**ENTERPRISES, LLC**

3262 Limestone Lane, (P) 540 879-2180  
Dayton, Virginia 22821 (F) 540 879-2739

**VPWENT@EMYPEOPLE.NET**